



i-Auction 14 | 27/2/14
Internet Auction

Rajgor'sTM
World of Coins

Advisory Panel

Prof. Dr. A. P. Jamkhedkar

Director (Retd.),
Dept. of Archaeology & Museums,
Govt. of Maharashtra

Mrs. Beena Sarasan

I.R.S. (Retd.),
Dy. Commissioner of Income Tax

Dineshbhai Mody

Founder Chairman, Dinesh Mody
Numismatic Museum & Institute,
University of Mumbai

Dinyar Madon

Senior Advocate,
Bombay High Court

Parag P. Tripathi

New Delhi

Rezwan Razack

Jt. M.D.,
Prestige Constructions,
Bangalore

Shauheen Daya

Connoisseur of Art,
Mumbai

Prof. Dr. V. S. Parekh

Head of Dept. (Retd.),
Dept. of Archaeology,
M.S. University of Baroda

Bidding Methods

Internet Bids - Get Registered on www.Rajgors.com
(Internet Bidding ends on 27 Feb. 2014 by 3:00 pm)

Fax Bids to +91-22-23870 647 (must be received on
or before 26 Feb. 2014 by 6:00 pm)

Postal Bids to the Regd. Office
(must be received on or before 26 Feb. 2014 by 6:00
pm)

SMS Bids on +91 90040 82585
(must be received on or before 27 Feb. 2014 by 2:00
pm)

Email Bids to bids@rajgors.com
(must be received on or before 27 Feb. 2014 by 2:00
pm)

Auction Preview

Your Preview Over Coffee

You are invited to Preview the Auction Lots at the
Registered Office of the Rajgor's over a cup of
Coffee.

On
Saturday, 22nd February 2014
from 11:00 am to 6:30 pm

Kindly inform us about your convenient time to
Preview the lots so that you can have our full
attention.

Do call us about your preferred lots and your timings
on - +91 9594 647 647

In case you are pre-occupied and can not make it,
than do call us for a convenient day for the Preview

Rajgor's Upcoming Auctions

Legacy of Gujarat Auction 15

Thursday, 6th March 2014
7:00 pm

The Comfort Inn President,
C G Road, Navarangpura,
Ahmadabad

World of Coins Auction 16

Saturday, 8th March 2014
3:00 pm

Sardar Patel Seva Samaj,
Off. C G Road, Navarangpura,
Ahmedabad

Heritage of India Auction 17

Thursday, 10th April 2014

Crystal Room,
The Taj Mahal Palace
Mumbai



Rajgor's

World of Coins

i-Auction 14

Internet Auction

Thursday, 27th February 2014

**Closing at
IST 3:00 pm onwards**

For Closing Schedule
&
the System of Real-Time Bidding,
kindly refer page 3

Rajgor's Auctions

Corporate Office:
605, Majestic Shopping Center,
Near Church, 144 J.S.S. Road,
Opera House, Mumbai 400004

Customer Care: 022-23820 647
Tel: 022-2366 3148 • 022-3079 3148
QBC 3148 • Cell: 09594 647 647
Fax: 022-23870 647

info@rajgors.com • www.Rajgors.com



To download the free Android App on your
Android Mobile Phone,
point the QR code reader application on your
phone at the image on left side.

Catalogue by : Dr. Dilip Rajgor
&
Gev F. Kias

Online Catalogue : www.Rajgors.com

Auction Team :

Dr. Dilip Rajgor	<i>Founder & CEO</i>
Gev F. Kias	<i>Head, Research</i>
Shikharani Nath	<i>Clients Relations Manager</i>
Manthan J. Rajgor	<i>Photography</i>
Sandip Desai	<i>Head, Finance</i>
Shilpesh Patil	<i>Creative Head</i>
Shailesh Palkar	<i>Graphic Designer</i>
Rupali Shinde	<i>Graphic Designer</i>
Upendra Salvi	<i>Web Master</i>
Akhilesh Chauhan	<i>Accountant</i>
Neelam Parave	<i>Accountant</i>
Vithoba Mahagaokar	<i>Logistics</i>
Haji Syed Shaikh	<i>Logistics</i>
&	
Beji B. Vimadalal	<i>Auction Crier</i>

Hi-Res Images :
Hi-Res images of all lots are available on
www.Rajgors.com

Auction Preview :
By appointment at the Office or at the Venue.

Terms & Conditions of Sale:
This auction is conducted under the Conditions of Sale as
stipulated in the catalogue.

© All rights reserved with the Rajgor's (2014)

Price: ₹ 250/-

Statutory:

Corporate ID No. : U74120MH2012PTC229332 (2012-13),
Numismatic Guarantee Service of
India Pvt. Ltd.
Antiques License No. : 22, 19-10-2012
VATTIN : 27720910479V w.e.f. 30-05-2012
CSTTIN : 27720910479C w.e.f. 30-05-2012
Service Tax No. : AADCN9840RSD001
PAN No. : AADCN9840R
VAT : 1.1% on Silver and Gold items
5% on items of other metals
12.5% on other items
No Tax on Paper Money & Philately
Buyer's Premium: 11.24% (including Service Tax)
+ shipping, handling & insurance

Bankers:

HDFC Bank, Charni Road Branch, Mumbai
Kindly **deposit Cash** in this account,
or issue Cheque in the name of -
NGS of India Pvt. Ltd., Current A/c No. 03567630000357
RTGS/NEFT/IFSC Code: HDFC0000356

ICICI Bank, Girgaum Branch, Mumbai
Kindly issue Cheque in the name of -
NGS of India Pvt. Ltd., Current A/c No. 641105000305
RTGS/NEFT/IFSC Code: ICIC0006411

Export of Antiquities:

According to the Antiquities and Art Treasures Act, 1972
(Act No. 52 of 1972), items (including coins) over 100 years old,
cannot be exported out of India except with the permission of the
Director General, Archaeological Survey of India, Janpath, New
Delhi.

Registration of Antiquities:

According to the Antiquities and Art Treasure Rules 1973
of the Antiquities and Art Treasures Act, 1972 (Act No. 52 of
1972), and Amendment S.O. 448 (E), dated 2.7.1976 as amended
by S.O. 397 (E), dated 15.5.1980, all coins and Numismatic
materials are **EXCLUDED** from the Compulsory Registration of
Antiquities.

However, all the antiquities listed as per the following
Schedule of the said Amendment, need to be compulsorily be
Registered with the Archaeological Survey of India.
(http://asi.nic.in/asi_legislations.asp)

"The following antiquities which have been in existence for
not less than one hundred years, namely:

Sculptures in stone, terracotta, metal, ivory and bone;
Paintings (including miniatures and tanks) in all media, that
is to say, paper, wood, cloth, silk and the like; **Manuscripts**,
where such manuscripts contain paintings, illustrations or
illuminations; Sculptured figures in **wood** (both in relief and
round)."

Auction Closing Schedule

Categories	Lot #	Closing Time (IST)
Ancient Coins	1-24	3:00 pm
Hindu Coins of Medieval India	25-26	3:15 pm
Sultanate Coins of Islamic India	27-29	3:30 pm
Coins of Mughal Empire	30-50	3:45 pm
Coins of Independent Kingdoms	51-59	4:00 pm
Princely States of India	60-119	4:30 pm
European Powers in India	120-140	4:45 pm
East India Company	141-190	5:15 pm
British India	191-291	6:15 pm
Republic of India	292-302	6:30 pm
Foreign Coins	303-304	6:45 pm
Tokens	305-306	7:00 pm
Medals	307-309	7:15 pm
Paper Money	310-315	7:30 pm

Closing of Internet Auction & Real-Time Bidding

Dear Patron,

An Internet Auction closes at a Pre-determined time, making all the Online Bidding stop at that point of time. However, if you are Outbid in last few seconds on your coveted lots, than it is not possible to make a fresh Higher Bid and win that lot. Moreover, if you are bidding on more than one lots than it becomes very difficult to bid on those lots in last few minutes.

To overcome these problems, the Rajgor's have introduced a new system of Internet Bidding called Real-Time Bidding.

Real-Time Bidding

The Real-Time Bidding is quite like a Physical or Floor Auction Bidding. Lots in the above given categories will close according to the Bid-Closing Schedule as given above.

However, if there is Bid recorded within a span of 2 Minutes prior to the lot's scheduled closing time (say 3:00 pm), the Count-down Clock for that lot will be reset to 2 Minutes more and the closing time of that particular lot will be extended accordingly (3:02 pm).

Moreover, the said lot will be further extended for another 2 minutes if there is a Bid recorded within a span of 2 Minutes prior to the lot's new extended closing time (3:02 pm), making the extended time on that lot till 3:04 and not 3:02 pm. As a consequence, the bidding on that lot will be like the Real-Time Bidding as seen during the physical auction. Finally, Bidding on any lot will only end if there is no bid recorded for a span of 2 minutes.

This is how you can bid and win lots of your choice even if you are Out Bid at the last few seconds by a Proxy Bid or Secrete Bid of some other Bidder.

This new system of Internet Bidding gives you a chance of not losing your lots just by a few hundred rupees and become a proud owner of your items.

So Happy Bidding and enjoy your collection.

Dilip Rajgor

Ancient Coins (600 BC to AD 700)

1 **Swastika Coin**, Ancient Saurashtra (c. 50 BC), Copper, **0.16 g**, crude design of the usual Six-armed symbol and a deity on obv, a bold **Swastika** struck in the centre with clockwise position. *Fine+*, *Smallest denomination in the Swastika series of coins in ancient India, Scarce.*

Estimate: ` 500-1,000.....

2 **Punch-marked Coins, Surashtra Janapada** (5th century BC), Silver, 0.9 g, ¼ **Karshapana**, Shrivatsa type with a big central symbol of a Shrivatsa (the mark representing Goddess Lakshmi) is placed in the centre on a square pedestal and ancillary symbols around. Traces of under-type coins still visible on obv and on rev. *Very Fine for the type, Scarce.*

Estimate: ` 700-1,000.....

3 **Punch-marked Coins, Ancient Narmada Valley, King Bhumidutta** (3rd century BC), Copper, 6.28 g, punch-marked type with five punches comprising of a river with fishes at bottom, a Triangle-headed standard in a railing, a tree in railing, an elephant waling to left and at the top a punch with Mauryan Brahmi legend reading **Rajno Bhumidutasa**. A Taurine in a Horse-shoe punched on the reverse. *Very Fine+ with clear and complete legend make the coin Rare and desirable.*

Estimate: ` 3,000-5,000.....

4 **Punch-marked Coins, Eran region** (2nd century BC), Copper, 8.14 g, uniface, 4 symbol-type, a river with fishes and turtles at bottom, an Ujjayini symbol on left, a Triangle-headed Standard at top and a tree in railing on the right. *Very Fine+, Rare.*

Estimate: ` 3,000-4,000.....

5 **Punch-marked Coins, Vanga (Bangal) Janapada** (2nd century BC), Billon, 3.30 and 3.31 g, 3 symbols type with a Chakra, a Six-armed symbol and a Boat on obv, a Conch-shell (Shankha) on rev. *Very Fine+, Scarce. 2 coins*

Estimate: ` 3,000-4,000.....

6 **Taxila** (2nd century BC), Copper, 7.14 g, single-broad punch type on obv consisting of a bold tree in railing and a Swastika and a taurine on either side. Uniface. Interestingly, the Taurine-like symbol is quite similar to the famous Kuntala Punch-marked coins of Maharashtra. *Very Fine+, Rare.*

Estimate: ` 1,500-2,500.....

7 **Indo-Greeks, Apollodotus II** (2nd century AD), Copper, 8.59 g, Greek God Apollo standing to front holding his Tripod in the centre with Greek legend around on obv, Tripod of Apollo placed in the centre within a dotted circle and Kharoshthi legend around on rev. A local crude issue of Saurashtra mint. *About Very Fine for the type, Scarce.*

Estimate: ` 900-1,000.....

8 **Ujjayini, King Vijayaka** (2nd century BC), Copper, 2.61 g, a bull standing to right and in front of it is a spear-like object while below its mouth is Brahmi legend, (*vija*)yeka, standing for Vijayaka (of Vijaya). The reverse has an Ujjayini symbol with a crescent in each orb. *Very Fine for the type, Rare.*

Inscribed coins of Ujjayini are very rare to come across the series where as name of a ruler on these coins is exceedingly rare to appear, except for a couple of names like the present Vijaya and Bhumimitra.

Estimate: ` 1,500-3,000.....

9 **Ujjayini** (2nd century BC), Copper, 3.04 g, a tree in railing in the centre, a serpent symbol on the left, an Ujjayini symbol on the right, uniface. *Very Fine, Scarce.*

Estimate: ` 1,100-1,500.....

10 **Ujjayini** (2nd century BC), Copper, 5.74 g, die-struck, anonymous, a group of symbols with a tree in railing on left, an Ujjayini symbol in the centre, a six-armed symbol at top and many other symbols but all derived from the erstwhile Punch-marked coinages. A large Ujjayini symbol with a circle in each orb on rev. *Very Fine+, Scarce.*

Estimate: ` 1,000-1,200.....

11 **Ujjayini** (2nd century BC), Copper, 8.29 g, die-struck, anonymous, a Sanyasin or Lord Mahakaal standing facing front in the centre of the coin with a Kamandalu in his left hand and a staff in his right hand, a tree in railing on left, a six-armed symbol on right and a Sun above the tree on obv. A large Ujjayini symbol with a circle in each orb on rev. *Very Fine+, Scarce.*

Estimate: ` 1,200-1,500.....

12 **Ujjayini** (2nd century BC), Copper, 3.59 g, die-struck, anonymous, a Goddess standing to right probably plucking a flower from a tree in railing on the right, her right hand resting on her waist on obv. A large Ujjayini symbol with empty orbs and a Taurine placed in between each angles of the symbol on rev. *Very Fine+, Scarce.*

Estimate: ` 1,000-1,500.....

13 **Ujjayini** (2nd century BC), Copper, 4.46 g, die-struck, anonymous, Gaja-Lakshmi type with the Goddess seated to right with her right hand in her lap and two elephants placed standing on lotus on her either side on obv. A large Ujjayini symbol with a circle in each orb on rev. *Very Fine+, Rare.*

Estimate: ` 2,500-3,000.....



1



7



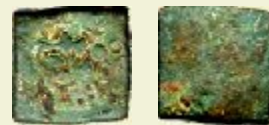
2



8



3



9



4



10



11



5



12



6



13

- 14 **Ujjayini** (2nd century BC), Copper, 2.97 g, die-struck, anonymous, an elephant standing to right and a tree in railing on the right field on obv. A large Ujjayini symbol with a circle in each orb on rev. *Very Fine, Scarce*.
Estimate: ` 1,500-2,000.....
- 15 **Anandas of Karwar, Mulananda** (1st century BC), Lead, 13.42 and 12.68 g, 2 Varieties of legend, **Mudananda** and **Mulananda**, Brahmi legend around a bucket type 8 arched hill on obv, a tree in railing in centre, a Swastika at bottom on left and a Triangle-headed Standard and a Shrivatsa on the bottom-right of the tree on the first coin, and on the second coin a Shrivatsa on the bottom-right of the tree. *Extremely Fine, Rare in his grade. 2 coins*
Estimate: ` 2,000-3,000.....
- 16 Anandas of Karwar, **Chutkulananda** (1st century BC), Lead, 17.12 g, Brahmi legend, *Rajno Chutkulanandasa* around a bucket type 8 arched hill on obv, a tree in railing in centre on rev. *Broad flan, Very Fine+, Rare in this condition*.
Estimate: ` 1,200-2,000.....
- 17 Anandas of Karwar, **Shivalananda** (1st century BC), Lead, 4.99 g, Brahmi legend, *Rajno Shivalanandasa* around a bucket type 8 arched hill on obv, a tree in railing in centre on rev. *Broad flan, Very Fine, Rare ruler*.
Estimate: ` 1,200-2,000.....
- 18 **Banavasis** (2nd century BC), Lead, 8.62 g, a sacrificial Horse of the **Ashvamedha** standing to right facing a Yupa (a sacrificial post) with a Shrivatsa symbol on obv, a tree in railing on rev but the rev has double-struck impression of the tree. **Error**, *About Very Fine, Rare*.
Estimate: ` 2,000-2,500.....
- 19 **Western Kshatrapas, Kshaharatas, Nahapan** (1st century AD), Copper, 1.79 g, Thunderbolt and arrow on obv, a tree in railing on rev. The typical Satavahana-type coin is issued by Nahapana after his successful conquest over Maharashtra and having won the Nasik-Junnar regions, the strongholds of the Satavahanas. He issued his own coins based on the typology of the Satavahanas with the addition of his regal symbol of a thunderbolt. *About Extremely Fine, Rare*.
Estimate: ` 2,000-3,000.....
- 20 Western Kshatrapas, Kshaharatas, **Nahapana**, Silver (3), **Kardamaka**, portrait type with Greek legend around on obv bust, tri-lingual, thunderbolt and arrow in centre and Brahmi and Kharoshthi legends around on rev. *The first coin is centrally struck with nearly complete Greek legend on obv, Very Fine+, Scarce. 3 coins*
Estimate: ` 1,800-2,000.....
- 21 Western Kshatrapas, **Kardamakas**, Silver (3), 2 Rulers: **Rudradaman I and Rudrasimha I** (2), as Kshatrapa and as Mahakshatrapa, Portrait type, the first one dateless with complete corrupt Greek legend behind the head. *About Extremely Fine, Scarce. 3 coins*
Estimate: ` 1,000-1,500.....
- 22 **Puri Kushanas** (5th century AD), Copper (2), 8.89 g, and 9.70 g, anonymous, King standing to left type on obv, and a deity standing to right with a big Crescent on left; the second coin has similar design of a King standing to left on obv, but the rev has a deity standing to left and a Crescent on right. With typical protruding marks of casting technique visible at edges. *Very Fine+, Scarce. 2 coins*
Estimate: ` 1,000-1,500.....
- 23 **Yaudheyas** (2nd century BC), Copper, 10.42 g, 1½ **Karshapana**, War God **Kartikeya**, standing facing front with six heads and holding a spear, Brahmi legend around him, *Bhagvato Svamino Brahamanyadevasya* on obv. Goddess Devasena standing facing front, a railed tree on her right hand and 10-arched hill surmounted by a Shrivatsa symbol on her left (Mac# 4467). *Very Fine for the type, Rare*.
Estimate: ` 1,500-2,500.....
- 24 **Yaudheya Republic** (4th century AD), set of 2 types, Copper, Drama, God Kartikeya, the Lord of War according to the Hindu mythology standing facing front with a spear in his right hand and the left resting on his waist, a peacock, his vehicle near his left feet, and Brahmi legend *yaudheya ganasa jaya*, hail the Yaudheya Republic, on obv; three varieties of rev type: Devasena, the wife of Yaudheya is standing to left with her right hand raised in the air and the left resting on her waist, the 2 types include a Kalasha (Water-vessel) the left field below her right hand and without any symbol below her hand on rev. *Very Fine, Scarce. 2 coins*
Estimate: ` 1,000-1,200.....

Hindu Coins of Medieval India (AD 700 to 1600)

- 25 **Vishnukundins** (7th-8th centuries AD), Bell metal, 8.49 g, Couch-shell (Shankha) in an ornate Sun-rayed border on obv, a roaring lion with mouth wide open to right and facing a Shrivatsa symbol, enclosed in a circle and a border of dots on rev. *About Extremely Fine for the type, Scarce in this grade*.
Estimate: ` 2,000-2,500.....
- 26 **Cheras**, Copper, 4.68 g, a Divine Lion standing to left with curled and raised tail, wings over its back and behind its head, facing a Yupa of a ceremonial Sacrifice, traces of Brahmi legend at the top, starting over the head of the animal as *Rajno...*, on obv. A tree in railing on rev. *Broad flan, About Extremely Fine for the type, Rare*.
Estimate: ` 3,500-5,000.....



14



15



16



17



18



19



20



21



22



23



24



25



26

Sultanates Coins of Islamic India (AD 712 to 1700)

Delhi Sultanate

- 27 **Turks, Masud Shah**, Silver, **Tanka**, Delhi mint, *Fi Zaman* type, mint name in the outer margin on obv. *Very Fine, Scarce*.
Estimate: ` 900-1,000.....
- 28 **Suris, Sher Shah Suri** (1538-1545), Silver, **Rupee**, Minless Bengal type, Circular areas type, AH 951 (G&G# D827). *Broad flan with complete die impressions on both the sides, Rare in this grade*.
Estimate: ` 1,500-2,000.....
- 29 **Suris, Sher Shah Suri**, Silver, **Rupee**, Mintless Bengal type, Square area type, AH 946 (G&G# D816). *Very Fine, Scarce*.
Estimate: ` 1,200-1,500.....

Coins of Mughal Empire (AD 1500 to 1857)

- 30 **Babur**, Silver, **Shahrukhi**, Kalima on obv, *Zahir ud din Muhammad Babur Badshah Ghazi* in centre on rev. *Usual flat flans, Fine+, Scarce*.
Estimate: ` 4,500-5,000.....
- 31 **Akbar**, Silver, **Rupee, Ahmadabad mint**, Allahu Akbar type, Ilahi 39, Azar Month. *Broad flan, Very Fine+, Scarce in this size*.
Estimate: ` 1,800-2,000.....
- 32 **Akbar**, Silver, **Tanka, Malwa issue** of Kalima on obv, usual name and title of Akbar on rev, mintless type. *About Extremely Fine, Scarce*.
Estimate: ` 1,200-1,500.....
- 33 **Jahangir**, Silver, 11.44 g, **Rupee, Ahmadabad mint, Inayat** type, AH 1030, RY 16. The RY date is error with the engraving of it in a retrograde way written as 61 (KM# 149.4). *About Extremely Fine, Rare Error*.
Estimate: ` 4,000-6,000.....
- 34 **Jahangir**, Silver, **Rupee, Jahangirnagar mint**, *Nur ud din* type, Aban Month, complete mint name at bottom on rev. *About Extremely Fine, Rare*.
Estimate: ` 3,000-4,000.....
- 35 **Shah Jahan**, Silver, **Rupee, Akbarnagar mint**, four-lines type, mint name with a Rising Star as a mint mark on obv, Ardibihisht Month, AH 1042, RY 6, Sahib Qiran type. *Very Fine, Scarce*.
Estimate: ` 1,500-2,000.....
- 36 **Shah Jahan**, Silver, **Rupee, Daulatabad mint**, Square-area type, mint name in the right margin on rev, AH 1066, RY 29. *About Extremely Fine, Scarce*.
Estimate: ` 2,200-2,500.....

- 37 **Shah Jahan**, Silver, **Rupee, Junagadh mint**, Square-area type, mint name in the left margin on rev. *Very Fine, Scarce*.
Estimate: ` 2,000-2,500.....
- 38 **Shah Jahan**, Silver, **Rupee, Multan mint**, four-lines type, mint name on obv, Isfandarmuz Month, AH 1039, RY 2, Sahib Qiran type. *About Extremely Fine, deep striking, Scarce*.
Estimate: ` 2,000-3,000.....
- 39 **Shah Jahan**, Silver, **Rupee, Tatta mint**, four-lines type, mint name on obv, Ardibihisht Month, AH 1040, Sahib Qiran type. *About Extremely Fine, deep striking, Scarce*.
Estimate: ` 2,500-3,000.....
- 40 **Shah Jahan**, Silver, ½ **Rupee, Patna mint**, mint name at left margin on rev, Square-area type, RY 27. *About Extremely Fine, Scarce*.
Estimate: ` 1,500-2,500.....
- 41 **Aurangzeb**, Silver, **Rupee, Azamnagar mint**, mint name in the second line on rev, AH 1110, RY 48. *Without any test marks, Extremely Fine+, Rare in this grade*.
Estimate: ` 3,000-4,000.....
- 42 **Aurangzeb**, Silver, **Rupee, Bijapur**, Dar ul Zafar mint, mint epithet in the second line and mint name in the last line on rev, AH 1106, RY 38. *About Extremely Fine, Complete mint name, Scarce in this grade*.
Estimate: ` 1,500-2,000.....
- 43 **Aurangzeb**, Silver, ½ **Rupee, Surat mint**, mint name at bottom on rev, AH 1112, RY 4x. *About Extremely Fine, Scarce*.
Estimate: ` 1,000-1,200.....
- 44 **Aurangzeb**, Silver, **Rupee (2), Akbarabad** Mustaqir ul Khilafat mint, mint name at top, lotus mint mark, AH 1113, RY 45; **Muhammad Shah**, Silver, **Rupee, Balwantnagar** mint, RY 28; and **Alamgir II, Aurangnagar** mint, complete mint name at bottom on rev, RY 9 but removed from a ring with a depression of the mount in the centre on obv. *3 coins*
Estimate: ` 4,000-4,500.....
- 45 **Muhammad Ibrahim**, Silver, **Rupee, Shahjahanabad**, Dar ul Khilafat mint, complete mint name at top on rev, AH 1124, RY Ahad. *Fine, Scarce*.
Estimate: ` 1,800-2,000.....
- 46 **Shah Jahan II**, Silver, **Rupee, Murshidabad mint**, complete mint name at bottom on rev, AH 1131, RY Ahad. *Very Fine, Rare*.
Estimate: ` 5,000-6,000.....
- 47 **Muhammad Shah**, Silver, **Rupee, Khambayat mint**, complete mint name at bottom on rev, RY 11. *About Extremely Fine, Scarce*.
Estimate: ` 1,100-1,500.....



27



35



43



28



36



29



37



30



38



44



31



39



45



32



40



46



33



41



34



42



47

48 **Alamgir II**, Silver, **Rupee, Arkat mint**, mint name at bottom on rev, RY 6 (frozen), Lotus mark, decorated fields. *Broader flan than usual dumpy coins, Extremely Fine, Scarce.*

Estimate: ` 1,100-1,500

49 **Alamgir II**, Gold, 0.18 g, ½ **Fanam, Kharpa** (Cuddapa) mint, AH 1168, name and year on obv, mint name on rev. *Extremely Fine, Scarce.*

Estimate: ` 1,200-1,500

50 **Shah Jahan III**, Silver, **Rupee, Surat mint**, mint name at bottom on rev. *Very Fine+, Scarce.*

Estimate: ` 2,200-2,500

Coins of Independent Kingdoms (AD 1500 to 1835)

Marathas

51 **Peshwas**, Copper, 6.91 g, **Shvarai Paisa**, Nagari legends on both the sides with *Chhatra / Pati* and a crescent and a Sun above the legend on obv, *Shari / Raja / Shiva* with a trident between *Ra* and *Ja* in the second line on rev. *Very Fine, Scarce.*

Estimate: ` 800-1,000.....

52 **Akbarabad** (Agra) mint, Silver, **Rupee**, Agra Mustaqir ul Khilafat mint, issued in the name of Shah Alam II, AH 1182, RY 9. *About UNC, Scarce with both the dates.*

Estimate: ` 1,200-1,500.....

53 **Akbarabad** (Agra) mint, Silver, **Rupee**, Agra Mustaqir ul Khilafat mint, issued in the name of Shah Alam II, AH 1183, RY 10. *About UNC, Scarce with both the dates.*

Estimate: ` 1,200-1,500.....

54 **Dauat Rao Scindhia, Akbarabad** (Agra) mint, Copper, **Paisa**, issued in the name of Shah Alam II, a Fish and a Pistol as mint marks, the coin was issued while the British Officers John & George Hessing were in Charge of the town. *About Very Fine, Scarce.*

Estimate: ` 2,500-3,000.....

55 **Saharanpur mint**, Copper, 16.29 g, **Paisa**, issued in the name of Mughal Emperor Shah Alam II, in the AH year 1215, and RY 42, mint name clearly visible at top on rev. *Broad flan, About Extremely Fine, Rare.*

Estimate: ` 1,000-2,500.....

Mysore

56 **Tipu Sultan** (1787-1799), Copper, **Double Paisa, Patan mint**, a walking elephant to left and a square design above it on obv, AM 1218, mint name on rev. *About Very Fine, Scarce.*

Estimate: ` 4,000-5,000.....

Rohilas

57 **Najibabad mint**, Silver, **Rupee**, issued in the name of Shah Alam II, complete mint name at top on rev, AH 1177, RY 5. *Very Fine+, Scarce.*

Estimate: ` 1,500-2,000.....

Sikhs

58 **Amritsar Mint**, Silver (3), **Rupee**, Leaf mint mark, mint name at top on rev, VS 1884, RY 86, 92 and 93, 3 RY years. *About Extremely Fine, Scarce. 3 coins*

Estimate: ` 5,000-6,000.....

59 **Amritsar mint**, Silver, **Rupee**, Leaf mint mark, mint name at top, VS 1876, RY 2 (KM# 22.2). *About Extremely Fine, Scarce.*

Estimate: ` 1,400-2,000.....

Princely States of India (AD 1785 to 1948)

Assam State

60 **Rudrasimha**, Silver, **Rupee**, SE 1622, a lion running to left at the bottom on obv, Bangla legend type. *Very Fine+, Scarce.*

Estimate: ` 1,800-2,200.....

61 **Set of 3 Denominations**, Silver, **Rupee, Rajeshwara Simha** (KM# 134); ½ **Rupee, Lakshmi Simha** (KM# 179), and ¼ **Rupee, Lakshmi Simha**, SE 1694. *Very Fine to About Extremely Fine, Rare as a set of 3 coins*

Estimate: ` 3,500-5,000.....

Awadh State

62 **Ghazi ud din Haidar Shah**, Silver, **Rupee**, issued in the name of Mughal **Emperor Shah Alam II**, Arms of the State on obv, name of the Mughal ruler and date on rev, AH 1234, RY 26, Lucknow mint. *About Extremely Fine, Scarce.*

Estimate: ` 3,500-4,000.....

63 **Ghazi ud din Haidar Shah**, Silver, **Rupee**, issued in **his own name**, arms of the State on obv, ruler's name and date on rev, AH 1235, RY Ahad, Lucknow mint. *Broad flan, Very Fine+, Scarce.*

Estimate: ` 2,500-3,000.....

64 **Wajid Ali Shah**, Silver, **Rupee**, AH 1252, RY 9, Arms of the State on obv, name of the ruler and date on rev, Lucknow mint. *About Extremely Fine, Scarce.*

Estimate: ` 2,500-3,000.....

Banswara State

65 **Lakshman Singh** (AD 1862-1905), Silver, **Rupee**, script reads as *Shahr Bansahpur* and *Samsatra* (KM 9.2). *Extremely Fine, Rare in this grade.*

Estimate: ` 1,800-2,500.....

Baroda State

66 **Sayaji Rao III**, Copper, **1 Paisa**, VS 1949, Machine-made Planchet, Nagari **Saa Gaa** with a shield on obv, value and date on rev. **Error with 10% Die-shift** on both the sides. *Very Fine, Scarce.*

Estimate: ` 900-1,000.....



48



56



62



49



57



50



51



58



52



59



63



53



60



64



54



65



55



61



66

67 Sayaji Rao III, Silver, **Rupee**, Small Flan type, **VS 11952**, Baroda mint, portrait type. *About Extremely Fine, Rare.*

Estimate: ` 6,000-7,000.....

Bharatpur State

68 Mahendrapur mint, Silver, **Rupee**, issued in the name of Shah Alam II, complete mint name at top on rev, AH 1185, RY 14, three dots placed as a triangle on the left of RY. *About Extremely Fine, Scarce.*

Estimate: ` 1,200-1,500.....

69 Mahendrapur mint, Silver, **Rupee**, issued in the name of Shah Alam II, complete mint name at top on rev, AH 118x, RY 14, 5 petal star as a mint mark on the left of RY. *About Extremely Fine, Scarce.*

Estimate: ` 1,200-1,500.....

Bikaner State

70 Ganga Singh Bahadur, Copper, **1/4 Anna**, with Portrait of Victoria Empress, Calcutta Mint, **1895**, *About Very Fine.*

Estimate: ` 2,000-2,200.....

71 Ganga Singh Bahadur, Silver, **Rupee, with Portrait of Victoria Empress**, Bombay Mint, **1892**, Certified by as NGS as **VF 35**.

Estimate: ` 1,500-2,000.....

72 Ganga Singh Bahadur, Silver, **Rupee**, Golden Jubilee Commemorative issue, portrait of the ruler facing front on obv, crowned initials GS at centre and value - date on rev, VS 1994. *Milled edge, Extremely Fine, Rare.*

Estimate: ` 6,500-7,000.....

Bindraban State

73 Copper, **Paisa, Bindraban** Mathura mint, issued in the name of Shah Alam II, Fish to right and below a Trident as mint marks on rev. *Very Fine, Scarce.*

Estimate: ` 800-1,200.....

74 Copper, **Paisa, Bindraban Mathura** mint, issued in the name of Shah Alam II, a full blown flower with leaves as mint mark on rev. *Broad flan, Very Fine, Scarce.*

Estimate: ` 1,200-2,000.....

Bundi State

75 **Ram Singh**, Silver (2), **Rupee**, with the name of Queen Victoria, S 1943, AD 1886; VS 1923-AD 1866. *Very Fine, Scarce. 2 coins*

Estimate: ` 2,000-2,500.....

Burdwan (Wardhman) State

76 **Cap Badge**, Aluminm Bronze, of the Prince, **Maharaj Kumar Abhay Chand Mahtab** around the central Coat of Arms of the State on front, pin on rev. Unusual to find a Cap Badge of none other than the Prince of a State, *Rare.*

Estimate: ` 1,500-3,000.....

Chamba State

77 **Charhat Singh** (AD 1808-1844), Copper, **Paisa**, Nagari legends on both the sides, ND but issued in 1844, without Trident below the legend on rev (KM# 6). *Very Fine for the type, Scarce.*

Estimate: ` 1,300-2,000.....

Cooch Behar

78 **Mada Narayan** (AD 1666-1681), Silver, **1/2 Rupee**, with the complete name of the ruler on obv. *Very Fine+, Scarce.*

Estimate: ` 1,500-2,000.....

79 **Pran Narayan** (1633-1666), Silver (4), **1/2 Rupee**, Set of 4 varieties: with a Crescent, a Dot in a Crescent, circle of dots around central Dot, and a Cross as mint marks. *Very Fine+, Scarce as a set of 4*

Estimate: ` 2,000-3,000.....

80 **Lakshmi Narayana** (AD 1587-1627), Silver, **Rupee**, *Sri Sri Lakshmi Narayanasya Saka 1509* on obv, *Sri Sri Shiva Charana Kamala Madhu Karasya* on rev, Saka 1509 (KM# 44). *Broad flan, About Extremely Fine, Scarce.*

Estimate: ` 2,200-3,000.....

Dhar State

81 **Anand Rao III** (AD 1860-1898), **Nazarana Paisa**, Copper, 6.89 g, Lord Hanuman flying to left carrying a Gada in the right hand and a Flag (Dhvaja) in his left hand on obv, Nagari legend in two lines, Dhar / Sa 1289 (cf. KM# 6). *About Extremely Fine for the type, Very Broad flan, not published in this size, Rare.*

Estimate: ` 2,000-4,000.....

82 **Anand Rao III**, Copper, 4.86 g, **Paisa**, Lord Hanuman flying to left carrying a *Gada* in the right hand and a Flag (*Dhvaja*) in his left hand on obv, Nagari legend in two lines, *Dhar / Sa 128x* (KM# 6). *About Extremely Fine for the type, Scarce.*

Estimate: ` 800-1,000.....

83 Anand Rao III, Copper, 3.88 g, **Paisa**, Lord Hanuman flying to left carrying a *Gada* in the right hand and a Flag (*Dhvaja*) in his left hand on obv, Nagari legend in two lines, *Dhar / Sa 128x* (KM# 6). *Similar to previous lot but weight is much reduced, Very Fine+ for the type, Scarce.*

Estimate: ` 800-1,000.....

Gwalior State

84 **Mahadji Rao** (AD 1761-1794), Silver, **Rupee, Ujjain Dar ul Fath mint**, issued in the name of Shah Alam II, **AH 1187, RY 15** with a scimitar on rev (KM# 218). *About Extremely Fine, Scarce with both the dates.*

Estimate: ` 1,000-1,200.....

85 Mahadji Rao (AD 1761-1794), Silver, **Rupee, Ujjain Dar ul Fath mint**, issued in the name of Shah Alam II, **AH 1188, RY 16** with a beautiful branch as a mint mark on the left of the RY date and a scimitar on rev (KM# 218). *About Extremely Fine, Scarce with both the dates.*

Estimate: ` 800-1,000.....



67



75



81



68



82



69



76



83



70



84



71



77



72



78



85



73



80



74



79

86 Mahadji Rao (AD 1761-1794), Silver, **Rupee, Ujjain** Dar ul Fath mint, issued in the name of Shah Alam II, **AH 1188, RY 12, Error for 16**, with a beautiful branch as a mint mark on the left of the RY date and a scimitar on rev (KM# 218). *About Extremely Fine, Scarce with both the dates.*

Estimate: ` 800-1,000.....

87 Mahadji Rao, Silver, **Rupee, Ujjain** Dar ul Fath mint, issued in the name of Shah Alam II, **AH 1189, RY 17** with a scimitar on rev (KM# 218). *Very Fine, Scarce with both the dates.*

Estimate: ` 800-1,000.....

88 Mahadji Rao, Silver, **Rupee, Ujjain** Dar ul Fath mint, issued in the name of Shah Alam II, **AH 119x, RY 25** with a scimitar on rev (KM# 218). *Extremely Fine, Scarce.*

Estimate: ` 800-1,000.....

89 Mahadji Rao (AD 1761-1794), Silver, **Rupee, Ujjain** Dar ul Fath mint, issued in the name of Shah Alam II, **AH 1199, RY 2x** with a scimitar, complete mint name at bottom on rev (KM# 218). *Very Fine+, Scarce with both the dates.*

Estimate: ` 800-1,000.....

90 Mahadji Rao, Silver, **Rupee, Ujjain** Dar ul Fath mint, issued in the name of Shah Alam II, **AH 120x, RY 30** with a scimitar on rev (KM# 218). *Extremely Fine+, Scarce.*

Estimate: ` 800-1,000.....

91 Mahadji Rao, Silver, **Rupee, Ujjain** Dar ul Fath mint, issued in the name of Shah Alam II, **AH 1203, RY 31** with a scimitar on rev (KM# 218). *Complete mint name, About Extremely Fine, Scarce with both the dates.*

Estimate: ` 800-1,000.....

92 Mahadji Rao, Silver, **Rupee, Ujjain** Dar ul Fath mint, issued in the name of Shah Alam II, **AH 1204, RY 32** with a scimitar on rev (KM# 218). *Complete mint name, About Extremely Fine, Scarce with both the dates.*

Estimate: ` 800-1,000.....

Hyderabad State

93 **Feudatory of Hyderabad State, Aurangabad**, Copper, Copper, **Toka Paisa**, Battle-axe on obv, Persian legend on rev (KM# 28). *Very Fine, Scarce.*

Estimate: ` 900-1,000.....

Indore State

94 **Ahilya Bai Holkar** (1765-1795), Silver, **Rupee, Malharnagar** mint, issued in the name of Shah Alam II, **AH 1185, RY 15**, Sun Face as mint mark on rev (KM# 76). *Broad flan than usual small dumpy coins, Very Fine+, Scarce in this grade.*

Estimate: ` 800-1,000.....

95 **Ahilya Bai Holkar**, Silver, **Rupee**, Malharnagar mint, issued in the name of Shah Alam II, **AH 1185, RY 15**, Sun Face as mint mark on rev (KM# 76). *Broad flan than usual small dumpy coins, Very Fine, Scarce in this grade.*

Estimate: ` 800-1,000.....

96 **Ahilya Bai Holkar**, Silver, **Rupee**, Malharnagar mint, issued in the name of Shah Alam II, **AH 1185**, Sun Face as mint mark on rev (KM# 76). *Broad flan than usual small dumpy coins, About UNC, Scarce in this grade.*

Estimate: ` 800-1,000.....

97 **Ahilya Bai Holkar**, Silver, **Rupee**, Malharnagar mint, issued in the name of Shah Alam II, **AH 1186, RY 16**, Sun Face as mint mark on rev, Complete mint name at bottom (KM# 76). *Broad flan than usual small dumpy coins, About Extremely Fine, Scarce in this grade.*

Estimate: ` 800-1,000.....

98 **Ahilya Bai Holkar**, Silver, **Rupee**, Malharnagar mint, issued in the name of Shah Alam II, **AH 1186, RY 127**, Sun Face as mint mark on rev (KM# 76). *Broad flan than usual small dumpy coins, Very Fine, Scarce in this grade.*

Estimate: ` 800-1,000.....

99 **Ahilya Bai Holkar**, Silver, **Rupee**, Malharnagar mint, issued in the name of Shah Alam II, **AH 1200, RY 27**, Sun Face as mint mark on rev (KM# 76). *Broad flan than usual small dumpy coins, About Extremely Fine, Scarce in this grade.*

Estimate: ` 800-1,000.....

100 **Ahilya Bai Holkar**, Silver, **Rupee**, Malharnagar mint, issued in the name of Shah Alam II, **AH 1204**, Sun Face as mint mark on rev (KM# 76). *Broad flan than usual small dumpy coins, Extremely Fine+, Scarce in this grade.*

Estimate: ` 800-1,000.....

101 Silver, **Rupee**, Malharnagar mint, Sun Face type, issued in the name of Shah Alam II, **AH 1289, RY 115**. *Extremely Fine, Scarce.*

Estimate: ` 800-1,000.....

102 Silver, **Rupee**, Indore mint, Sun Face type, issued in the name of Shah Alam II, **AH 1296, VS 1941**, Nagari legend on obv, Persian legend on rev. *Very Fine, Scarce.*

Estimate: ` 3,000-4,000.....

103 **Tukoji Rao**, Silver, **Rupee**, Sun Face type, **AH 1289**. *About Extremely Fine, Scarce.*

Estimate: ` 3,000-4,000.....

104 Silver (4), **Set of 4 Denominations**: Rupee, ½ Rupee, ¼ Rupee and ⅛ Rupee, Malharnagar mint, in the name of Shah Alam II. *Very Fine, Scarce. 4 coins*

Estimate: ` 4,500-5,000.....



86



93



99



87



94



100



88



95



101



89



96



102



90



97



103



91



92



98



104

Jaipur State

- 105 **Man Singh II**, Copper, **Nazarana Paisa**, Sawai Jaipur mint, AD 1924, RY 30. *About Extremely Fine, Scarce.*
Estimate: ` 3,000-3,500.....

Janjira State

- 106 **Sidi Ibrahim Khan III** (AD 1848-1879), Silver, **Rupee, Muhiabad Rupee** of the Maratha Peshwas counter-marked with Nagari **Ja** for **Janjira** on rev, above the Ankush mint mark. *Extremely Fine+, Rare.*
Estimate: ` 7,000-9,000.....

Kalat State

- 107 **Khudadad Khan** (AD 1856-1893), Copper, **Falus**, AH 1295, issued in the name of Mahmud Khan Durrani, Kalat mint (KM# 21). *Usual flan fields, Very Fine for the type, Rare.*
Estimate: ` 4,000-5,000.....

Kutch State

- 108 **Pragmalji II** (AD 1860-1875), Silver (4), **Set of 4 Denominations**: 5 Koris, 1932-1875; 2 ½ Koris, 1932-1875; 1 Kori, 1920-1863; and ½ Kori, 1920. All with the name of Queen Victoria, Bhujnagar mint. *Very Fine to About Extremely Fine, Scarce. 4 coins*
Estimate: ` 3,000-3,500.....

Makrai State

- 109 **Raja Bharat Shah** (AD 1886-1920), Copper, **Paisa**, Katar on obv, Nagari legend, *Shri / Mak / Rai* on rev, ND but issued between AD 1886-1920 (KM# 1). *Very Fine+, Scarce.*
Estimate: ` 1,100-1,500.....

Manipur State

- 110 **Nara Singh** (1844-1851), Bell Metal, 0.78 g, **Sel**, uniface with Bangali initial **Ra** on obv. *About Extremely Fine, Scarce.*
Estimate: ` 1,000-1,500.....

Mewad State

- 111 Silver, **Rupee**, Swarupshahi Series, *Dosti Lundhan* on obv, *Chitrakuta / Udaipur* on rev, minted Udaipur mint, c. AD 1851-1930, anonymous (KM# 7). *Very Fine.*
Estimate: ` 1,500-2,000.....
- 112 **Fateh Singh**, Silver, **Complete set of 5 denominations**: Rupee, ½, 1/4, 1/8 and 1/16 Rupee, Udaipur mint, *Dosti Londhan* type, machine-struck, minted at **Calcutta** mint, VS 1985 (1931-33). *Very Fine to About Extremely Fine, Scarce as a set of 5*
Estimate: ` 2,700-3,500.....

Mysore State

- 113 **Dewan Purnaiya** (AD 1799-1810), Copper, **25 (XXV) Cash**, roaring lion to left on obv, tri-lingual value on rev, ND (KM# 187). *Very Fine for the type, Broad flan, Scarce.*
Estimate: ` 1,800-2,500.....

Ratlam State

- 114 Copper (2), **1 Paisa**, Hanuman type with flying Lord Hanuman to left on obv, value and date within wreath on rev. 2 varieties of planchets - **Thick and Thin Planchets.** *About UNC, Scarce. 2 coins*
Estimate: ` 2,000-2,500.....

Sailana State

- 115 **Jaswant Singh**, Bronze, ¼ **Anna**, with Portrait of Edward VII, Calcutta Mint, **1908**, *Very Fine, Rare*
Estimate: ` 2,000-2,200.....
- 116 **Jaswant Singh**, Bronze, ¼ **Anna**, with **Portrait of King George V**, Calcutta Mint, **1912**, *AUNC, Rare*
Estimate: ` 3,000-3,500.....

Sirmur State

- 117 **Maharaja Fateh Prakash**, Copper, 19.69 g, **Paisa**, Nahan mint, bow and arrow as mint marks, VS 1877 (KM# 11), *Very Fine+, Rare.*
Estimate: ` 1,500-2,500.....

Travancore State

- 118 Copper (3), **3 denominations**: 8 Cash, 4 Cash and 1 Cash, Conch shell and value type. *Very Fine, Scarce. 3 coins*
Estimate: ` 1,200-1,500.....
- 119 **Bala Rama Varma**, Silver, **1 Fanam**, ME 1116, name and value on obv, Conch shell on rev. *About Very Fine, Scarce.*
Estimate: ` 1,000-1,500.....

European Powers in India (AD 1500 to 1962)

Indo-Danish

- 120 Lead, **Cash**, **DANS / BORG** on obv, **D / SOL** on rev. *About Extremely Fine for the lead coin type, Scarce.*
Estimate: ` 1,500-2,000.....
- 121 Lead, **Cash**, **DA / NISB / ORG** on obv, **AM / AGE / R** on rev. *Very Fine for the lead coin type, Scarce.*
Estimate: ` 1,500-2,000.....
- 122 **Christian IV**, Lead, **Cash**, Crowned **C4** on obv, **SPSP / 1646** with retrograde 4 in the date on rev. *Very Fine, Rare.*
Estimate: ` 1,500-2,500.....
- 123 **Christian IV**, Lead, **Cash**, Crowned **C4** on obv, **D: B: / 1647** on rev. *Very Fine, Rare.*
Estimate: ` 1,500-2,000.....
- 124 **Christian IV**, Lead, **Cash**, Crowned **C4** on obv, **GVD** and a big Dot above and below the legend on rev. *Very Fine, Rare.*
Estimate: ` 1,500-2,000.....



105

112



106



114



107



113



115



116



117



108



118



109



110



119



121



122



111



123



124



125

125 **Frederic III** , Lead, **Cash**, Crowned **F3** on obv, Lotus with four petals and transposed numerals **76** on rev. *Very Fine, Rare.*

Estimate: ` 1,500-2,000.....

126 **Frederic III** , Lead, **Cash**, Crowned **F3** on obv, saucer shaped base with raised centre point high arch of pellets looking like a basket or a traditional lamp on rev. *Very Fine, Rare.*

Estimate: ` 1,500-2,000.....

127 **Frederic III** , Lead, **Cash**, Crowned **F3** on obv, crowned horse-lion and a curved battle-axe to left with English **E** symbol behind its tail on rev. *Very Fine, Rare.*

Estimate: ` 1,500-2,000.....

128 **Frederic III** , Lead, **Cash**, Crowned **F3** on obv, a Cross with a loop, curved to left on rev. *About Very Fine, Rare.*

Estimate: ` 1,500-2,000.....

129 **Frederic III** , Lead, **Cash**, Crowned **F3** on obv, a Swan to right with spread wings and a crown over the head of the bird on rev. *About Very Fine, Rare.*

Estimate: ` 1,500-2,000.....

130 **Christian VI**, Copper, **2 Cash**, Crowned **C6** dividing **17** and **31** on obv, Norse lion on a curved battle-axe on rev, **1731**. *About Extremely Fine, Rare.*

Estimate: ` 1,500-2,000.....

131 **Christian VII**, Copper, **10 Cash**, Crowned **C7** on obv, **KAS / 1736** and initial **R** between the date on rev. *About Extremely Fine, Rare.*

Estimate: ` 1,500-2,000.....

132 **Christian VII**, Silver, **10 Cash**, Crowned **C7** on obv, crowned shield between the date **178x** on rev. *Very Fine, Rare.*

Estimate: ` 2,500-3,000.....

133 **Frederic VI**, Copper, **10 Cash**, Crowned **FR** on obv, **X / KAS / 1839** on rev. *Very Fine, Scarce.*

Estimate: ` 1,500-2,000.....

134 **Christian III**, Copper, **Cash**, crowned **C3** on obv, **KAS / 1841** on rev. *Very Fine, Scarce.*

Estimate: ` 1,500-2,000.....

135 **Frederic IV**, Copper, **2 Cash**, Crowned **F4** on obv, crowned **DOC** monogram with **2 KAS** below on rev. *Very Fine+, Scarce.*

Estimate: ` 1,500-2,000.....

Indo-French

136 **Arkat mint**, Silver, **Rupee**, issued in the name of Mughal Emperor Shah Alam II, **AH 1197, RY (2)4**, mint name at bottom, elongated *Sanah* and a double-leaf floral mark on the place of RY date on rev. *Very Fine, Rare with both the dates and this mint mark.*

Estimate: ` 1,500-3,000.....

Indo-Portuguese

137 **Goa mint**, Copper (4), **Set of 4 Denominations**: 10 Reiss, 1845; 6 Reiss, 1845; 4 ½ Reiss, 1845; and 3 Reiss, ND; value on obv, crowned Shield with date on rev. *About Extremely Fine for the type, Rare as a set of 4*

Estimate: ` 8,000-10,000.....

138 **Set of 6 Denominations**: 6 Escudos, 1959; 3 Escudos, 1958; 1 Escudo, 1959; 60 Centavos, 1959; 30 Centavos, 1958; and 10 Centavos, 1958. *About Extremely Fine, Scarce as a set of 6 denominations.*

Estimate: ` 1,200-2,000.....

139 **Copper (4), Set of 4 Denominations**: ½ Tanga, 1903; ¼ Tanga, 1903; 1/8 Tanga, 1903; and 30 Centavos, 1958. *Very Fine, Scarce. 4 coins*

Estimate: ` 1,200-1,500.....

140 **Republic**, Silver, ½ **Rupia, 1936, UNC, Scarce**

Estimate: ` 2,000-2,200.....

East India Company-Bengal Presidency

141 **Calcutta mint**, Silver, **Rupee, Farrukhabad** mint name, issued in the name of Shah Alam II, RY 45, mint name at bottom on rev, issued from the Calcutta mint, Plain edge, Thick rim on both the sides. *About UNC, Scarce.*

Estimate: ` 1,500-2,000.....

142 **Calcutta mint**, Silver (3), **Set of 3 denominations**: Rupee, ½ and ¼ Rupee, with the mint name Murshidabad at bottom on rev, issued in the name of Shah Alam II, RY 19, milled edge, a dot as a mint mark on obv. *Very Fine, Scarce as a set of 3 coins*

Estimate: ` 3,000-4,000.....

143 **Calcutta mint**, Silver (3), **Set of 3 denominations of Heavy Series**: Rupee 12.34 g, ½ Rupee 6.17 g, and ¼ Rupee 3.05 g, with the mint name Murshidabad at bottom on rev, issued in the name of Shah Alam II, RY 19, Plain edge, a Crescent on rev, above *Seen of Manus* on rev, as a mint mark. *Extremely Fine+, Scarce as a set of 3 coins*

Estimate: ` 3,000-4,000.....

144 **Calcutta mint**, Silver, ½ **Rupee**, issued in the name of Shah Alam II, with the mint name Murshidabad, written at bottom on rev, AH 19, extra **Dot** as mint mark on obv, oblique milling. *About Extremely Fine, Scarce.*

Estimate: ` 1,000-1,500.....

145 **Murshidabad mint**, Silver, **Rupee**, issued in the name of Shah Alam II, mint name at bottom on rev, RY 10, Crescent mint mark. *Fine.*

Estimate: ` 1,200-1,500.....

146 **Murshidabad mint**, Silver, **Rupee**, issued in the name of Shah Alam II, mint name at bottom on rev, RY 11, Crescent mint mark. *Fine.*

Estimate: ` 1,200-1,500.....



125



126



127



128



129



130



131



132



133



134



135



136



141



137



140



138



139



142



143



144



145



146



147 **Murshidabad** mint, Silver, **Rupee**, issued in the name of Shah Alam II, mint name at bottom on rev, RY 12, Crescent mint mark. *Fine*.
Estimate: ` 1,200-1,500.....

148 **Murshidabad** mint, Silver, **Rupee**, issued in the name of Shah Alam II, mint name at bottom on rev, AH 1198, RY 19, Crescent mint mark. *Broad flan, Extremely Fine, Scarce*.
Estimate: ` 1,200-1,500.....

East India Company- Bombay Presidency

149 **Mumbai** mint, Silver, **1/5 Rupee**, issued in the name of **Shah Jahan III**, with the mint name Seurat, RY 5. *Very Fine, Scarce*.
Estimate: ` 1,200-1,500.....

150 **Mumbai** mint, Silver, **1/5 Rupee**, issued in the name Alamgir II, with the mint name Surat, Malabar Coast issue of Tellicherry (KM# 621). *Very Fine+, Scarce*.
Estimate: ` 1,500-2,000.....

151 Copper (4), **Set of 4 Denominations: Double Pice**, 1794; **1/2 Anna**, 1834; **1/4 Anna**, 1833; and **1 Pie**, 1833. Adal series with Scales. *About Very Fine, Scarce. 4 coins*
Estimate: ` 1,300-1,500.....

152 Copper (3), **Set of 3 Denominations: Double Pice**, AH 1219, AD 1804, Inverted Axis; **1 Pice**, AH 1219, AD 1804, Inverted Axis; and **1/2 Pice**, AH 1219, AD 1804, Inverted Axis. *Very Fine, Rare as a set of 3*
Estimate: ` 6,500-8,000.....

153 Copper (4), **Set of 4 Dump Denominations: 4 Pice**, 2 Pice, 1 Pice and **1/2 Pice**, Scales on obv, Bale Mark on rev, Adal series. *Fine+ to Very Fine, Rare as a set of 4*
Estimate: ` 3,000-4,000.....

154 Copper (3), **1/4 Anna**, AH 1246, AD 1830; AH 1246, AD 1832; and AH 1249, AD 1833; all Inverted axis, Arms of the Company on obv, Scales on rev, Adal Series. *Very Fine+, Scarce. 3 coins*
Estimate: ` 2,500-3,000.....

155 Copper (2), **Double Pice**, 1821, Scales on obv, Bale mark on rev, Nagari legend *Neem Anna*; **1/2 Pice**, 1821, Scales on obv, Bale mark on rev, Nagari legend *Ardha Paisa*. *Very Fine, Scarce. 2 coins*
Estimate: ` 3,000-4,000.....

156 Copper, **1 Pice, 1820**, Scales on obv, Bale mark on rev, Nagari legend *Paisa*. *Very Fine, Scarce*.
Estimate: ` 2,000-3,000.....

157 Copper, **Copperoon Paisa** or Angelica Paisa, English legend on obv, fleet of ships on rev. *Very Fine for the type, Scarce*.
Estimate: ` 1,200-1,500.....

158 Copper, **Double Pice**, Bale Mark with initials **UEIC** for United East India Company on obv, crowned shield on rev. *Very Fine, Scarce*.
Estimate: ` 1,800-2,000.....

159 **Mumbai** mint, Silver, **Rupee**, issued in the name of Mughal Emperor **Muhammad Shah**, Mumbai name written completely at the bottom on rev, **RY 11**. *Very Fine, Scarce*.
Estimate: ` 1,500-2,000.....

East India Company- Madras Presidency

160 Copper (3), **Set of 3 denominations: 20 Cash**, 1808; **10 Cash**, 1808; and **5 Cash**, 1803, Arms on obv, value and date on rev. About *Very Fine, Scarce. 3 coins*
Estimate: ` 1,200-1,500.....

East India Company-Uniform Coinage

161 **William IV**, Silver, **Rupee**, Calcutta Mint, **1835, R.S. incused, C/II/20 berries, bud Leaves**, *About Very Fine, Scarce*
Estimate: ` 4,000-4,500.....

162 **William IV**, Silver, **Rupee**, Calcutta Mint, **1835, 'F' incused, A/II/19 berries, bud Leaves, edge knock otherwise Extremely Fine, Scarce**
Estimate: ` 3,000-3,500.....

163 **William IV**, Silver, **Rupee**, Calcutta Mint, **1835, Dug out 'F', A/III/19 berries, bud Leaves, Very Fine, Scarce**
Estimate: ` 2,500-3,000.....

164 **William IV**, Silver, **Rupee**, Bombay Mint, **1835, no initials, B(a)/II/20 berries, bud Leaves, edge knock otherwise Very Fine, Scarce**
Estimate: ` 2,500-2,800.....

165 **Victoria Queen**, Copper, **1/2 Anna**, Calcutta Mint, **1845, numerical '4' with serif pointing upwards, Extremely Fine, Rare**
Estimate: ` 5,000-5,500.....

166 **Victoria Queen**, Continuous Legend, Silver, **2 Annas**, Calcutta Mint, **1841, 16 berries, a Lock of hair between hair ribbons, Very Fine, Scarce**
Estimate: ` 1,500-2,000.....

167 **Victoria Queen**, Continuous Legend, Silver, **1/4 Rupee**, Calcutta Mint, **1840, English head, 20 berries, ghost image on reverse, About Extremely Fine, Scarce**
Estimate: ` 1,500-2,000.....

168 **Victoria Queen**, Continuous Legend, Silver, **Rupee**, Calcutta Mint, **1840, English head (short neck), 19 berries, bud Leaves, AUNC, Scarce**
Estimate: ` 2,200-2,500.....



- 169 Victoria Queen, Continuous Legend, Silver, **Rupee**, Calcutta Mint, **1840, completely modified features, 35 berries, AUNC, Scarce**
Estimate: ` 2,500-3,000.....
- 170 Victoria Queen, Continuous Legend, Silver, **Rupee**, Madras Mint, **1840, 'S' incused, English head (short neck), 19 berries, About Extremely Fine, Scarce**
Estimate: ` 2,000-2,500.....
- 171 Victoria Queen, Continuous Legend, Silver, **Rupee**, Calcutta Mint, **1840, completely modified features, 35 berries, UNC, Rare**
Estimate: ` 3,000-3,500.....
- 172 DE13-06 Victoria Queen, Continuous Legend, Silver, **Rupee**, Bombay Mint, **1840, English head (short neck), 19 berries, two Leaves, Very Fine, Rare**
Estimate: ` 2,200-2,500.....
- 173 Victoria Queen, Continuous Legend, Silver, **Rupee**, Bombay Mint, **1840, English head (short neck), 19 berries, bud Leaves, About Extremely Fine, Rare**
Estimate: ` 2,200-2,500.....
- 174 Victoria Queen, **Continuous Legend**, Silver, **Rupee**, Calcutta Mint, **1840, modified features, 35 berries, Crescent, Very Fine, Scarce**
Estimate: ` 3,000-3,500.....
- 175 Victoria Queen, Continuous Legend, Silver, **Rupee**, Calcutta Mint, **1840, modified features, 35 berries, Crescent, 'M' incused, Very Fine, Scarce**
Estimate: ` 3,000-3,500.....
- 176 Victoria Queen, Continuous Legend, Silver, **Rupee**, Calcutta Mint, **1840, English head (short neck), 19 berries, bud Leaves, Extremely Fine, Scarce**
Estimate: ` 1,800-2,200.....
- 177 Victoria Queen, Continuous Legend, Silver, **Rupee**, **Bombay Mint, 1840, English head (short neck), 19 berries, bud Leaves, AUNC, Rare**
Estimate: ` 2,500-3,000.....
- 178 Victoria Queen, Continuous Legend, Silver, **Rupee**, Madras Mint, **1840, English head (short neck), 19 Large berries, Large diamond, 'V' in relief, short Leaves, two Leaves, About Very Fine, Rare.**
Estimate: ` 2,200-2,500.....
- 179 Victoria Queen, Continuous Legend, Silver, **Rupee**, Calcutta Mint, **1840, English head (short neck), 19 berries, two Leaves, small diamonds, AUNC, Rare**
Estimate: ` 2,200-2,500.....
- 180 Victoria Queen, Continuous Legend, Silver, **Rupee**, Calcutta Mint, **1840, completely modified features, 35 berries, 'M' incused, Extremely Fine, Rare**
Estimate: ` 2,700-3,000.....
- 181 Victoria Queen, Continuous Legend, Silver, **Rupee**, Madras Mint, **1840, English head (short neck) 'S' incused, 19 berries, two Leaves, Extremely Fine + , Scarce**
Estimate: ` 2,200-2,500.....
- 182 Victoria Queen, Continuous Legend, Silver, **Rupee**, Madras Mint, **1840, 'S' incused, English head (short neck), 35 berries, 'M' raised, Extremely Fine, Scarce**
Estimate: ` 2,500-3,000.....
- 183 Victoria Queen, Continuous Legend, Silver, **Rupee**, Calcutta Mint, **1840, Completely Modified features, 35 berries, Crescent, 'M' incused, Very Fine, Rare**
Estimate: ` 2,500-3,000.....
- 184 Victoria Queen, Continuous Legend, Silver, **Rupee**, Calcutta Mint, **1840, Indian head, 35 berries, Crescent, About Very Fine, Scarce**
Estimate: ` 1,500-2,000.....
- 185 Victoria Queen, Dividend Legend, Silver, **Rupee**, Calcutta Mint, **1840, W.W. raised (W.W. struck twice one upon other), 28 berries, About Extremely Fine, Scarce**
Estimate: ` 2,000-2500.....
- 186 Victoria Queen, Dividend Legend, Silver, **Rupee**, Madras Mint, **1840, W.W.B raised, dot after B, 28 berries, AUNC, Scarce**
Estimate: ` 2,200-2,500.....
- 187 Victoria Queen, Dividend Legend, Silver, **Rupee**, Madras Mint, **1840, W.W.S raised, (clear 'S'), 28 berries, About Extremely Fine, Scarce**
Estimate: ` 2,000-2,500.....
- 188 Victoria Queen, Dividend Legend, Silver, **Rupee**, Madras Mint, **1840, W.W.B raised, dot after B, 28 berries, Large diamonds, Very Fine, Scarce**
Estimate: ` 1,800-2,200.....
- 189 Victoria Queen, Dividend Legend, Silver, **Rupee**, Madras Mint, **1840, W.W.B raised (no dot after B), 28 berries, About Extremely Fine, Scarce**
Estimate: ` 1,800-2,200.....
- 190 Victoria Queen, Dividend Legend, Silver, **Rupee**, Madras Mint, **1840, W. W. B raised, 28 berries, Very Fine +, Scarce**
Estimate: ` 2,500-3,000.....
- 191 **Victoria Queen**, Copper, ½ Anna (2), Madras Mint, **1862, bust 'A', About Very Fine, 2 Coins**
Estimate: ` 1,500-2,000.....

**British India
(AD 1858 to 1947)**



169



176



183



170



177



171



178



184



172



179



173



180



185



174



181



175



182



186



- 192 Victoria Queen, Copper, ½ **Anna**, Madras Mint, **1862, bust 'A', Very Fine, Scarce**
Estimate: ` 1,200-1,500.....
- 193 Victoria Queen, Copper, ½ **Anna**, Calcutta Mint, **1862, bust 'A', About Very Fine, Scarce**
Estimate: ` 800-1,000.....
- 194 Victoria Queen, Silver, **Rupee** (3), Calcutta Mint, **1862, B/II (c)/0/0, A/III/0/0, A/II (a)/0/0, About Very Fine to Very Fine. 3 Coins**
Estimate: ` 3,600-4,000.....
- 195 Victoria Queen, Silver, **Rupee**, Calcutta Mint, **1862, B/II/0/0, Small Bust, Very Fine for the type, Unlisted, Very Rare**
Estimate: ` 5,000-5,500.....
- 196 Victoria Queen, Silver, **Rupee** (2), Madras Mint, **1862, B/II/0/0, & Bombay Mint 1862, C/II/1/2, Very Fine 2 Coins**
Estimate: ` 2,200-2,400.....
- 197 Victoria Queen, Silver, **Rupee**, Bombay Mint, **1862, 5 Panels type, Very Fine (cleaned), Scarce**
Estimate: ` 3,000-3,300.....
- 198 Victoria Queen, Silver, **Rupee**, Calcutta Mint, **1862, A/III/0/0, Very Fine, Scarce**
Estimate: ` 1,500-1,700.....
- 199 Victoria Queen, Silver, **Rupee**, Calcutta Mint, **1862, B/III/0/0, Very Fine, Scarce**
Estimate: ` 1,500-1,700.....
- 200 Victoria Queen, Silver, **Rupee** (2), Bombay Mint, **1862, B/II/2/0, & A/II/1/2, Very Fine + to Extremely Fine, (2 Coins)**
Estimate: ` 2,000-2,500.....
- 201 Victoria Queen, Silver, **Rupee**, Bombay Mint, **1862, B/I/0/4, Very Fine +, Scarce**
Estimate: ` 3,000-3,200.....
- 202 Victoria Queen, Silver, **Rupee**, Bombay Mint, **1862, C/II/1/2, About Very Fine, Rare**
Estimate: ` 6,000-6,500.....
- 203 Victoria Empress, Copper, **1/12 Anna**, Bombay Mint, **1877, bust A, Very Fine, Scarce**
Estimate: ` 800-1,200.....
- 204 Victoria Empress, Copper, **1/12 Anna**, Calcutta Mint, **1897, bust 'B', numeral '9' over struck on '8' of date, About Extremely Fine, Extremely Rare.**
Estimate: ` 3,000-3,500.....
- 205 Victoria Empress, Copper, ¼ **Anna** (2), Bombay & Calcutta Mint, **1877, Fine to Very Fine +, Scarce, 2 Coins**
Estimate: ` 1,200-1,500.....
- 206 Victoria Empress, Copper, ¼ **Anna** (2), Calcutta Mint, **1877, & Bombay Mint, 1884, Very Fine + to Extremely Fine, Scarce, 2 Coins**
Estimate: ` 1,000-1,200.....
- 207 Victoria Empress, Copper, ¼ **Anna**, Calcutta Mint, **1880, B/II/'C' incused, NGS graded MS 62 RB superb, Rare**
Estimate: ` 2,000-2,500.....
- 208 Victoria Empress, Copper, ¼ **Anna**, Calcutta Mint, **1880, B/II/'C' incused, AUNC with Green Patina, Scarce**
Estimate: ` 1,800-2,200.....
- 209 Victoria Empress, Copper, ¼ **Anna**, Calcutta Mint, **1882, B/II/'C' incused, UNC, Rare**
Estimate: ` 3,000-4,000.....
- 210 Victoria Empress, Copper, ¼ **Anna**, Calcutta Mint, **1889, B/II, NGS graded MS 61 RB choice, Rare**
Estimate: ` 1,500-2,000.....
- 211 Victoria Empress, Copper, ¼ **Anna**, Calcutta Mint, **1901, B/II, NGS graded AMS 50 +**
Estimate: ` 1,000-1,200.....
- 212 Victoria Empress, Silver, **2 Annas**, Bombay Mint, **1877, A/I/dot, die flaw on obv. Extremely Fine, Scarce**
Estimate: ` 1,200-1,500.....
- 213 Victoria Empress, Silver, **2 Annas**, Calcutta Mint, **1878, B/II, Very Fine, Rare**
Estimate: ` 3,500-4,000.....
- 214 Victoria Empress, Silver, **2 Annas**, Calcutta Mint, **1881, B/II/'C' incused, Very Fine +, Very Rare**
Estimate: ` 2,000-2,200.....
- 215 Victoria Queen, Silver, ¼ **Rupee**, Calcutta Mint, **1876, A/I, Fine +, Scarce**
Estimate: ` 1,500-1,700.....
- 216 Victoria Queen, Silver, ¼ **Rupee**, Calcutta Mint, **1884, C/II/'C' incused, Fine +, Scarce.**
Estimate: ` 1,500-1,700.....
- 217 Victoria Empress & George V, Silver, ¼ **Rupee** (3), Bombay Mint **1889, 1925**, Calcutta Mint, **1934, About Very Fine to Extremely Fine. 3 Coins**
Estimate: ` 1,200-1,500.....
- 218 Victoria Empress, Silver, ½ **Rupee**, Bombay Mint, **1899, A/I/'B' incused (inverted), UNC with Mint Luster, Scarce**
Estimate: ` 2,500-3,000.....
- 219 Victoria Queen, Silver, **Rupee**, Bombay Mint, **1874, C1/II/no dot, Very Fine +, Scarce**
Estimate: ` 2,200-2,500.....



192



197



203



193



198



204



199



205



194



206



195



200



201



207



196



202



208



- 220 Victoria Queen, Silver, **Rupee**, Bombay Mint, **1874**, **C1/II/no dot**, *About Very Fine, Scarce*
Estimate: ` 1,500-1,700.....
- 221 Victoria Queen, Silver, **Rupee**, Bombay Mint, **1874**, **A2/II/no dot**, *Extremely Fine +, Scarce*
Estimate: ` 2,200-2,500.....
- 222 Victoria Queen, Silver, **Rupee**, Bombay Mint, **1874**, **A2/II/no dot**, *Extremely Fine, Scarce*
Estimate: ` 1,800-2,200.....
- 223 Victoria Empress, Silver, **Rupee**, Bombay Mint, **1879**, **A3/IV/dot**, *Extremely Fine +*
Estimate: ` 1,500-1,700.....
- 224 Victoria Empress, Silver, **Rupee**, Calcutta Mint, **1881**, **A1/I/'C' incused** *About Very Fine, Scarce*
Estimate: ` 5,000-5500.....
- 225 Victoria Empress, Silver, **Rupee**, Calcutta Mint, **1881**, **A1/I/'C' incused**, *About Very Fine, Scarce*
Estimate: ` 5,000-5,500.....
- 226 Victoria Empress, Silver, **Rupee**, Bombay Mint, **1883**, **A3/I/'B' raised**, *Very Fine +, Scarce*
Estimate: ` 1,500-1,700.....
- 227 Victoria Empress, Silver, **Rupee** (2), Bombay Mint, **1884**, **A3/I/'B' raised**, & Calcutta Mint **1893**, **C3/I (i)/'C' incused**, *Very Fine + 2 Coins*
Estimate: ` 2,000-2,200.....
- 228 Victoria Empress, Silver, **Rupee**, Bombay Mint, **1885**, **A3/II (i)/'B' raised**, *About Extremely Fine.*
Estimate: ` 1,500-2,000.....
- 229 Victoria Empress, Silver, **Rupee**, Bombay Mint, **1885**, **C2/I (i)/'B' raised**, *About Very Fine, Scarce*
Estimate: ` 2,000-2,200.....
- 230 Victoria Empress, Silver, **Rupee** (2), Bombay Mint, **1887**, **A3/I (i)/'B' incused (inverted) & 1888**, **C2/I (i)/'B' incused**, *Fine + to About Very Fine. 2 Coins*
Estimate: ` 3,000-3,300.....
- 231 Victoria Empress, Silver, **Rupee**, Bombay Mint, **1889**, **C2/I/'B' raised**, *About Very Fine, Scarce*
Estimate: ` 1,500-1,700.....
- 232 Victoria Empress, Silver, **Rupee**, Bombay Mint, **1892**, **C2/I (ii)/'B' raised**, *About Very Fine, Scarce*
Estimate: ` 1,500-1,700.....
- 233 Victoria Empress, Silver, **Rupee**, Calcutta Mint, **1898**, **C3/I (i)/'C' incused** *Very Fine+, Scarce*
Estimate: ` 2,000-2,200.....
- 234 Victoria Empress, Silver, **Rupee**, Calcutta Mint, **1900**, **C3/I (i)/'C' incused**, NGS graded **AMS 55 +**, *Scarce*
Estimate: ` 1,200-1,500.....
- 235 Victoria Empress, Silver, **Rupee**, Bombay Mint, **1901**, **A3/I (ii)/'B' incused**, NGS graded **AMS 55 +**, *Scarce*
Estimate: ` 1,200-1,500.....
- 236 **Edward VII**, Bronze, $\frac{1}{4}$ **Anna**, Calcutta Mint, **1907**, **die flaw on obv.** NGS graded **AMS 55+**
Estimate: ` 800-1,000.....
- 237 Edward VII, Bronze, $\frac{1}{4}$ **Anna** (2), Calcutta Mint, **1907 & 1908**, **Error – ghost image of Edward portrait on reverse**, *Very Good to About Very Fine, Rare. 2 Coins*
Estimate: ` 2,000-2,500.....
- 238 Edward VII, George V, George VI, Copper & Bronze, $\frac{1}{4}$ **Anna** (9), **1908, 1910 (2), 1913 (2), 1917, 1918, 1919 & 1940**, *Extremely Fine to UNC, Scarce. 9 Coins*
Estimate: ` 2,300-2,500.....
- 239 Edward VII, Silver, **2 Annas** Bombay Mint, **1910**, **dot**, NGS graded **AMS 58 +**, *Rare*
Estimate: ` 1,500-2,000.....
- 240 Edward VII, Silver, **Rupee** (2), Bombay Mint, **1903 & 1909**, *Very Fine, Scarce. 2 Coins*
Estimate: ` 2,200-2,400.....
- 241 **George V**, Copper, $\frac{1}{2}$ **Pice** (8), Calcutta Mint, **1912, 1914, 1915, 1917, 1922, 1924, 1935, 1936**, *Very Fine to UNC, Scarce. 8 Coins*
Estimate: ` 1,200-1,500.....
- 242 George V, Copper, $\frac{1}{4}$ **Anna**, Calcutta Mint, **1911**, **PIG type**, *Extremely Fine, Scarce*
Estimate: ` 2,500-3,000.....
- 243 George V, Copper, $\frac{1}{4}$ **Anna** (5), Bombay Mint, **1924, 1926, 1928, 1930, 1936**, *All UNC, Scarce, 5 Coins*
Estimate: ` 2,000-2,500.....
- 244 George V, Cupro-Nickel, **1 Anna** (7), Bombay Mint, **1913, 1914, 1916, 1917, 1918, 1919, 1920**, *without dot, Fine + to About Very Fine, Scarce, 7 Coins*
Estimate: ` 1,500-2,000.....
- 245 George V, Cupro-Nickel, **1 Anna** (5) **1924 CM, 1925 BM, 1926 BM, 1927 BM, 1928 CM**, *Fine+ to Very Fine, Scarce. 5 Coins*
Estimate: ` 1,500-2,000.....
- 246 George V, Cupro-Nickel, **1 Anna** (2), Calcutta Mint, **1927**, **no dot**, *UNC, Rare. 2 Coins*
Estimate: ` 5,000-5,500.....
- 247 George V, Cupro-Nickel, **1 Anna** (2), Calcutta Mint, **1928 & 1929**, *AUNC to UNC, Rare. 2 Coins*
Estimate: ` 2,000-2,500.....
- 248 George V, Cupro-Nickel, **1 Anna** (6), **1929 CM, 1930 CM, 1933 CM, 1934 CM, 1935 BM, 1936 BM**, *Fine + to Very Fine + Scarce. 6 Coins*
Estimate: ` 1,500-2,000.....



220



232



221



227



233



222



228



223



229



234



224



235



225



230



226



231



236



- 249 George V, Cupro-Nickel, **2 Annas** (8) **1918 CM, 1919 CM, 1923 BM, 1924 BM, 1925 BM, 1926 BM, 1935 BM, 1936 BM**, *Fine + to About Very Fine. 8 Coins*
Estimate: ` 1,600-2,000.....
- 250 George V, Cupro-Nickel, **2 Annas** (10), **1918 BM, 1919 CM, 1920 CM, 1923 BM, 1924 BM, 1925 BM, 1928 BM, 1929 CM, 1935 CM, 1936 BM**, *Fine +, Scarce. 10 Coins*
Estimate: ` 2,200-2,500.....
- 251 George V, Cupro-Nickel, **2 Annas**, Bombay Mint, **1926**, dot, *UNC, Rare*
Estimate: ` 1,500-2,000.....
- 252 George V, Cupro-Nickel, **2 Annas** (2), Bombay & Calcutta Mint, **1928**, *Fine +, Scarce. 2 Coins*
Estimate: ` 800-1,000.....
- 253 George V, Cupro-Nickel, **2 Annas**, Calcutta Mint, **1933**, no dot, *About Very Fine, Scarce*
Estimate: ` 800-1,000.....
- 254 George V, Cupro-Nickel, **2 Annas** (2), Calcutta Mint, **1933 & 1934**, *Fine to Fine +, Scarce. 2 Coins*
Estimate: ` 1,200-1,500.....
- 255 George V, Cupro-Nickel, **4 Annas**, Bombay Mint, **1920**, dot. *Very Fine +, Scarce*
Estimate: ` 1,200-1,500.....
- 256 George V, Cupro-Nickel, **8 Annas**, Calcutta Mint, **1919**, no dot, *Very Fine +, Scarce*
Estimate: ` 2,200-2,500.....
- 257 George V, Silver, $\frac{1}{2}$ **Rupee**, Bombay Mint, **1923**, dot, NGS graded **AMS 55**, *Scarce*
Estimate: ` 1,000-1,200.....
- 258 George V, Silver, $\frac{1}{2}$ **Rupee**, Bombay Mint, **1924**, dot, NGS graded **AMS 50**, *Scarce*
Estimate: ` 1,000-1,200.....
- 259 George V, Silver, **Rupee**, Calcutta Mint, **1911**, no dot, **Pig type**, *Very Fine, Scarce*
Estimate: ` 2,500-2,700.....
- 260 George V, Silver, **Rupee** (2), Calcutta & Bombay Mint, **1911**, **Pig type**, *Very Fine to About Extremely Fine, Scarce. 2 Coins*
Estimate: ` 3,600-4,000.....
- 261 George V, Silver, Rupee (2), Calcutta Mint, **1911**, & Bombay Mint, **1922**, *Very Fine to Very Fine +, Scarce, (2 Coins)*
Estimate: ` 5,600-6,000.....
- 262 **George VI, Die-Token**, Nickel, 10.60 g, a Royal Crown in the centre with legend, **H. M. MINT * BOMBAY*** on obv; **DIE / 192** on rev. Plain edge with a hole at top-centre to place in a metal rod for safe keeping.
These Die Tokens were employed to name and number the Coin Dies for reference purpose as in case of a need of a new Die during the minting process of coins, new Dies were called by their respective numbers to identify and employ at appropriate time. *Unusual, Rare.*
Estimate: ` 4,500-6,000.....
- 263 George VI, Copper, **1/12 Anna**, Bombay Mint, **1942**, dots by date, *Very Fine, Scarce*
Estimate: ` 500-700.....
- 264 George VI, Copper, $\frac{1}{4}$ **Anna**, Bombay Mint, **1938**, no dots by ONE, *Very Fine, Scarce*
Estimate: ` 1,000-1,200.....
- 265 George VI, Cupro-Nickel, **2 Annas**, Calcutta Mint, **1939**, Head type II, *Very Fine, Rare*
Estimate: ` 1,000-1,200.....
- 266 George VI, Cupro-Nickel & Nickel- Brass, **2 Annas** (9), Bombay Mint, **1939 to 1947**, dots by date, *Very Fine to AUNC, Scarce as a complete date set. 9 Coins*
Estimate: ` 2,000-2,500.....
- 267 George VI, Cupro-Nickel & Nickel- Brass, **1 Anna** (9), **1939 to 1947**, *Fine + to UNC, Scarce as complete date set. 9 Coins*
Estimate: ` 1,200-1,500.....
- 268 George VI, Cupro-Nickel, **2 Annas** (2), Bombay & Calcutta Mint, **1940**, *Very Fine to Extremely Fine. 2 Coins*
Estimate: ` 1,000-1,200.....
- 269 George VI, Cupro-Nickel, **2 Annas** (2), Bombay Mint, **1941**, dots by date, **1st thin decorative stroke, 2nd thick decorative stroke**, *AUNC, Scarce. 2 Coins*
Estimate: ` 1,500-2,000.....
- 270 George VI, Cupro-Nickel, **2 Annas** (2), Bombay & Calcutta Mint, **1941**, *Very Fine + to AUNC. 2 Coins*
Estimate: ` 600-700.....
- 271 George VI, Nickel-Brass, **2 Annas** (2), Bombay Mint, **1942**, dots by date, **1st small numeral '4', obv. re-engraved Crown, 2nd Large numeral '4'**, *Very Fine to AUNC, Rare. 2 Coins*
Estimate: ` 2,500-3,000.....
- 272 George VI, Nickel-Brass, **2 Annas** (2), Bombay Mint, **1943**, dots by date, **1st normal numeral '3', 2nd bottom curve of numeral '3' extended**. *About Very Fine to Extremely Fine, Rare. 2 Coins*
Estimate: ` 3,000-3,500.....



- 273 George VI, Cupro-Nickel, **2 Annas** (2), Bombay Mint, **1943**, dots by date, **1st thin numeral '43'**, **2nd thick numeral '43'**, *Very Fine + to Extremely Fine, Rare. 2 Coins*
Estimate: ` 2,500-3000.....
- 274 George VI, Nickel-Brass, **2 Annas** (2), Bombay Mint, **1944**, dots by date, **1st small numerical '44'**, **2nd large numerical '44'**, *About Very Fine to AUNC, Rare. 2 Coins*
Estimate: ` 2,500-3,000.....
- 275 George VI, Silver & Nickel, **Rupee** (2), 1/4 Rupee, Lahore Mint, **1944**, Bombay Mint, **1947**, Bombay Mint, **1945**, *Very Fine to AUNC. 3 Coins*
Estimate: ` 700-900.....
- 276 George VI, Cupro-Nickel, **2 Annas**, Bombay Mint, **1946**, dots by date, **ERROR obv. with extra metal**, *Rare*
Estimate: ` 2,000-2,500.....
- 277 George VI, Cupro-Nickel, **2 Annas** (2), Calcutta Mint, **1946**, no dots by date, **1st small numeral '6'**, **2nd Large numeral '6'**, *Very Fine + to Extremely Fine, Rare. 2 Coins*
Estimate: ` 2,000-2,500.....
- 278 George VI, Cupro-Nickel, **2 Annas** (2), Calcutta Mint, **1946**, no dots by date, **1st Obv thick Legend**, **2nd Obv thin Legend**, *Very Fine + to AUNC, Very Rare. 2 Coins*
Estimate: ` 6,000-7,000.....
- 279 George VI, Cupro-Nickel, **2 Annas** (2), Calcutta Mint, **1946**, no dots by date, **1st small dot below neck**, **2nd Large dot below neck**, *Very Fine to Extremely Fine, Scarce. 2 Coins*
Estimate: ` 1,500-2,000.....
- 280 George VI, Cupro-Nickel, **2 Annas** (2), Bombay & Calcutta Mint, **1946**, *Very Fine + to AUNC. 2 Coins*
Estimate: ` 700-900.....
- 281 George VI, Cupro-Nickel, **2 Annas** (3), Bombay Mint, **1947**, dots by date, **1st normal dots**, **2nd Large dots**, **3rd re-engraved dots**, *Very Fine to AUNC, Scarce. 3 Coins*
Estimate: ` 2,000-2,500.....
- 282 George VI, Cupro-Nickel, **2 Annas** (2), Bombay & Calcutta Mint, **1947**, *About Very Fine to Extremely Fine. 2 Coins*
Estimate: ` 500-700.....
- 283 George VI, Silver, 1/4 **Rupee**, Bombay Mint, **1945**, **dot, Large '5'**, *About Very Fine, Scarce.*
Estimate: ` 1,500-1,700.....
- 284 George VI, Silver, 1/2 **Rupee**, Bombay Mint, **1941**, **dot**, Error-Die Shift on both sides, *Extremely Fine for the type, Rare*
Estimate: ` 4,000-4,500.....
- 285 George VI, Silver, **Rupee**, Bombay Mint, **1938**, **dot**, *Very Fine, Scarce.*
Estimate: ` 6,500-7,000.....
- 286 George VI, Silver, **Rupee**, **1940**, Mint cancellation scissor cut, **CM incused on obverse**, *Very Rare.*
Estimate: ` 2,000-2,200.....
- 287 George VI, Silver, **Rupee**, Bombay Mint, **1941**, **A/I/dot**, **no dot below neck**, **ghost image on reverse**, *AUNC, Very Rare*
Estimate: ` 2,000-2,200.....
- 288 George VI, Silver, **Rupee**, Bombay Mint, **1943**, **Large head, small '3'**, *About Very Fine, Scarce*
Estimate: ` 2,000-2,200.....
- 289 George VI, Silver, **Rupee**, Bombay Mint, **1943**, **Large head, small '3'**, *About Extremely Fine, Scarce*
Estimate: ` 2,000-2,200.....
- 290 George VI, Silver, **Rupee**, Bombay Mint, **1943**, **Large head, small '3'**, *Very Fine (cleaned), Scarce*
Estimate: ` 1,800-2,000.....
- 291 George VI, Nickel, Copper, & Nickel Brass, set of 10 coins, **1947** Rupee, **1946** 1/2 Rupee, **1947** 1/4 Rupee, **1943** 2Annas, **1944** 1 Anna, **1943** 1/2 Anna, **1945** 1 Pice, **1941** 1/4 Anna, **1939** 1/2 Pice & **1941** 1/12 Anna, *All UNC (10 Coins)*
Estimate: ` 1,200-1,500.....

Republic of India (AD 1947 to present)

- 292 **1969, UNC Set of Mahatma Gandhi**, Set of 4 coins from 20 Paise, 50 Paise, 1 Rupee & 10 Rupees, Bombay mint, Diamond Dot mint mark. *Packed in original green Rexin cover, with white all the data cards. Extremely Fine+, Rare.*
Estimate: ` 5,000-6,000.....
- 293 **1996 VIP Coin Set of 2nd International Crop Science Congress**, Kolkata mint, 5 Rupees (2 coins), RB# 189. *Restruck in Blue Velvet Box, Rare.*
Estimate: ` 6,000-7,000.....
- 294 **1997, UNC Set of Cellular Jain**, Port Blair, issued under the series of Felicitation to Freedom Fighters, 1 Rupee (2), FSS, Calcutta mint. *In blister packing, Rare.*
Estimate: ` 5,000-6,000.....
- 295 **1 Naya Paisa**, Brass, **1962**, Bombay mint. The **Die-axis** of the coin is at X o'clock on rev. *Very Fine, Scarce.*
Estimate: ` 1,000-1,200.....
- 296 **1 Rupee Lakhi**, Cupro-nickel, 6.16 g, Small Flan type, plain edge, Lakhi or Brockage of obv type with the negative impression of the obv of Ashokan Pillar. *Extremely Fine+, Scarce.*
Estimate: ` 1,000-2,000.....



273



274



284



275



285



286



287



288



276



277



289



295



278



279



283



280



296



290



281



292



282

.297 **2 Rupees Error**, Cupro-nickel, National Integration type, Blank Reverse with no traces of minting on the rev. *Very Fine+*, *Scarce*.
Estimate: ` 1,200-1,500.....

298 **2 Rupees Error**, Nickel, National Integration, **1998**, Calcutta mint. Magnetic properties of the Planchet shows that it has higher percentage of Nickel than the usual Cupro-Nickel mixture. *Very Fine+*, *Scarce*.
Estimate: ` 1,200-1,500.....

299 **2 Rupees Error**, FSS, **2011**, Bombay mint, Diamond mark, regular type with 10% Die Shift error on both the sides. *About Extremely Fine, Scarce*.
Estimate: ` 1,200-1,500.....

300 **50 Paisa Error**, FSS, 3.76 g, **1996**, Calcutta mint, **Parliament Building** issue, Double struck on both the sides. *About Extremely Fine, Rare Error*.
Estimate: ` 2,000-3,000.....

301 **20 Paise Lakhi**, Aluminum, 2.20 g, probably Calcutta mint, lakhi or Brockage of obv type with the negative impression of the Ashokan Pillar on obv. Due to excessive pressure of repeated striking of the dies with the coin still remaining in the lower die slot, resulted in the widened flan and heavy cracks in the flans. *Extremely Fine, Scarce*.
Estimate: ` 1,500-2,000.....

302 **1 Rupee**, FSS (12), Noida mint, **Set of 2013** with a **Collection of all Die-axis variations**, All the 12 coins are having die-rotations on the Clock-wise positions, namely I, II, III, IV, V, VI, VII, VIII, IX, X, XI and XII positions. All are packed in a card packet. *All UNC, interesting. 12 coins*.
Estimate: ` 2,500-3,000.....

Foreign Coins (AD 1500 to present)

303 **Ceylon - Sri Lanka**, Chola-type, Gold, 0.53 g, **Fanam or 1/8 Pagoda**, a king standing to right on obv, Nagari legend **Darak** on rev (De Silva 39). *About Extremely Fine+*, *Scarce*.
Estimate: ` 2,700-3,000.....

304 **Italia-Somalia**, Vittorio Emanurie III, Silver, **Una (1) Rupia, 1919, R** mint mark, portrait on obv, crowned denomination and date on rev, milled edge. *About Extremely Fine, Rare*.
Estimate: ` 5,000-6,000.....

Tokens

305 **Calcutta mint Silver Jubilee Medal**, Silver, 12.01 g, Mint building of India Government Mint Building, Alipore Calcutta on obv, Silver / JUBILEE / CELEBRATION / 19TH MARCH 1977 within wreath on rev. Plain edge. *About Extremely Fine, Scarce*.
Estimate: ` 3,000-4,000.....

306 **Aga Khan Token**, Brass, 15.27 g, Silver Jubilee Token portraying the bust of H H Aga Khan to right on obv, with the legend Silver Jubilee 1957-1982; Arabic legend around central scepter on rev. Certified by NGS as AMS 58+, *Scarce*.
Estimate: ` 1,000-1,200.....

Medals (AD 1700 to present)

307 **George V, Silver, General Service Medal**, portrait of the King to left on obv, Goddess Victory to left on obv. No bar at the top, awarded to 159 SEPOY SUNDER SINGH 3-9-BHOPALINF (MYB 174). *A small cut mark on the edge over S of Singh otherwise About Extremely Fine*.
Estimate: ` 2,500-3,500.....

308 **George VI, Silver, Coronation Medal**, twin busts of King George VI and Queen Elizabeth on obv, crowned GRI and around GEORGE VI QUEEN ELIZABTH / CROWNED / 12 MAY 1937 on rev (MYB 314). *With suspension and ring at top. Unnamed. About Extremely Fine, Scarce*.
Estimate: ` 1,500-2,500.....

309 **Japan Expo 70 Medal**, Japan World Exposition Osaka Medal 1970. *In original Box. Scarce*.
Estimate: ` 3,000-3,500.....

Paper Money (AD 1700 to present)

Republic of India

310 **1 Rupee, Set of 56 Different Notes**: Complete collection of all the 56 types of notes right from 1950 to 1994 (Except the first note, LK Jha - B, and the 1964 Note). *All are UNC, Rare as a set of 56 notes*.
Estimate: ` 6,000-7,000.....

311 **10 Rupees Error Notes (2)**, with same set of Serial Numbers, R21-007994 on both the notes, Signed by I G Patel, Inset C, Ashokan Pillar Watermark, Ship motif on rev. Both the notes are picked by the present collector from actual circulation in market. *Very Fine+*, *Very Rare to find a combo of same serial numbers*.
Estimate: ` 30,000-35,000.....

312 **1 Rupee Error, 1986**, Signed by **S. Venkitaramanan**, Inset A, Prefix 88B. The front of the note is usually printed but the back side of the note is printed diagonally half and the rest of the unprinted note is white. *Very Fine, Rare*.
Estimate: ` 3,000-4,000.....



297



304



305



298



299



308



303



300



301



309



306



307



310



311



302



312

313 **2 Rupees Error**, Signed by **Manmohan Singh**, Tiger type, without Inset and Serial numbers. The place of the Serial numbers are blank and seems to be printed twice on some other note of the note sheet, a trace of the same can be found on the reverse with digit 5 printed in black at the top margin. *Very Fine, Rare*.

Estimate: ` 4,000-5,000.....



313

314 **10 Rupees Error**, Signed by **R N Malhotra**, Peacocks and animals series, Inset C, with the error in misprinting of serial numbers in the top-right corner but printed on the extra piece of paper at the back because of folding of the right-hand sheet. Extra-paper, misprint and half serial number errors. *About UNC, Rare*.

Estimate: ` 3,000-4,000.....



314

315 **100 Rupees Star Error**, Signed by **D. Subbarao**, Inset L, Prefix 2CC*. The serial numbers are not fully printed on the top-right corner of the note because of the folding of the corner of the note at the time of punching of serial numbers. Cancelled by a Bank with two red lines across the face of the note.

It is interesting that the Star Series Notes were introduced by the Reserve Bank of India to replace any notes that were defective in terms of paper, printing or serial numbers. Such error notes were removed by the staff of the Bank and were replaced by such Stat Series Notes so as not to make any deficit of notes in a pack of 100. However, such a Replacement Note for Error notes itself became Error and misprint and could not be replaced by yet another Star note. Hence such an error note crept into circulation to be found and collected by collectors. *Very Fine, Rare*.

Estimate: ` 3,000-4,000.....



End of Auction



315



237



270



238



240



239



165



168



187



166



271



167



272



188



189



242



190



191



241



243



246



244



245



247



291



209



216



210



219



211



220



212



213



214



215



218

248



293



217



294

Conditions of Sale

- 1) This is a public auction sale conducted by Mumbai based licensed auctioneer, **Rajgor's Auctions of NGS of India Pvt. Ltd.** (hereinafter referred to as "Auctioneer"). Bidding in this Auction constitutes **acceptance by you (the "Bidder") of all the conditions of sale** stated herein. Bidders may include consignors who may bid and purchase lots in the Auction consigned by the consignor or by other consignors pursuant to their consignment agreement. The Auctioneer reserves the right to include in any auction sale its own material. Bidder acknowledges and agrees that the Auctioneer may not be required to pay a Buyer's Premium, or other charges that other Bidders may be required to pay and may have access to information concerning the lots that is not otherwise available to the public. Any claimed conflict of interest or claimed competitive advantage resulting there from is expressly waived by all participants in the Auction. The Buyer is the Bidder who makes the highest bid accepted by the Auctioneer, and includes the principal of any Bidder acting as an agent. In the event of any dispute regarding the Bidders, the Auctioneer shall have absolute discretion to determine the dispute or may re-sell the disputed lot.
- 2) The Rajgor's Auctions reserve the right to **postpone or cancel the auction** without notice in its sole discretion. Any lot/s may be withdrawn by Auctioneer without notice prior to its being opened for bidding. The Auctioneer or Consignor shall not be liable for any costs or damages arising from either the withdrawal of material at the auction or the delay or cancellation of the auction.
- 3) The Auctioneer shall have **absolute discretion** to divide any lot, to combine any lots, or to withdraw lots from the sale without giving any reasons. The bidding shall be regulated at the absolute discretion of the Auctioneer who shall have the right to refuse any bid/s.
- 4) The **estimate figures** for each lot are the Auctioneer's estimation of an expected price only. These estimates are not representative of a reserve price and are published only as a guide to buyers. Bidders may bid at or within the estimate, or above the estimate, however, bids which are less than the lower estimate will not be considered by the Auctioneer.
- 5) Lots may carry a **Reserve**. A Reserve is a confidential price or bid below which the Auctioneer will not sell an item or will re-purchase on behalf of the Consignor or for the Rajgor's Auctions. The Auctioneer reserves the right to place bids on behalf of the consignor up to the amount of a reserve price established by the consigner.
- 6) The Auctioneer acts solely as **an agent** and shall not be responsible for any **default either by the buyer or by the seller** or for any action or claim which may arise in respect of any lot.
- 7) The bids will be opened for bidding in numerical order. In the event that bids for the same amount are received for the same lot, the **winning bid** will be the **earliest received**. The decision of the Auctioneer as to identity of the winning bidder shall be final.
- 8) Only a **registered member** is allowed to bid in the auction. Each auction requires a new registration. Registration process may require your Client ID and/or you may be required to fill a registration form with your address, telephone number, and signature, after which you will be allotted a numbered paddle to bid. First-time bidders may be asked to **provide references** and/or a refundable **money deposit** and/or show a government-issued picture ID before the start of the auction, subject to the Auctioneer's sole discretion. Any person submitting bids on behalf of a corporation or any other person / persons, agrees to be personally liable for full payment of the invoice. The Auctioneer reserves the right to prevent those bidders to take a part in auction who have not paid their previous bills.
- 9) Bidding commissions for anyone unable to attend the auction in person may be carried out by the Auctioneer without charge, in strict confidence. But "**BUY**" commissions will only be accepted, solely at the absolute discretion of the Auctioneer. No bids will be accepted from Minors. Bids lower than lower estimate will not be accepted.
- 10) Auctioneer shall make maximum efforts to properly enter and **execute bids** received by E-mail, Fax or by other means. However, Auctioneer shall not be liable for any errors for incorrectly entered or incorrectly executed bids. Bidders are responsible for their bids including any errors they may make in placing bids. Auctioneer reserve the **right to refuse and reject unsigned bid sheet**.
- 11) Lots are sold as shown **with all faults, imperfections and errors of description**. Neither the Auctioneer nor the seller shall give warranty to any buyer in respect of any lot, or be liable for any fault or error of description. All statements as to the items sold, whether made in catalogues, during the course of the auction, or otherwise are statements of opinion only, and are not and shall not be taken to be statements or representations of fact. The Auctioneer reserves the right in forming his opinion, to consult and rely upon any expert or authority considered by him reliable. Notwithstanding the forgoing, if any lot should have been wrongly described in any material aspect, the buyer may reject the same, provided that he shall have given **notice of intention** to do so and shall have returned the same to the Auctioneer **within seven (7) days** from the day of the sale. Under no circumstances will the Auctioneer be liable for any costs, expenses or damages incurred by the buyer in respect of any lot, including, but not limited to, loss of any kind of profit whatsoever.
- 12) Bidders are advised to **scrutinize the lots they bid for**. Buyers must satisfy themselves as to the accuracy of their purchases at the time of delivery. The Auctioneer cannot be held responsible for any discrepancy which might be discovered after the lots have been **removed from their original packing**.
- 13) Each lot shall be at the buyer's risk from the fall of the hammer.
- 14) **Delivery is against payment in full**. Delivery of the items may be made on the following day after receiving full payment of the purchase price.
- 15) The Purchase price shall be the sum of winning bid and a buyer's premium of **10% plus applicable taxes**, has to be paid by the purchaser. The total Invoice amount shall be paid in full prior to delivery of the lot within **7 days** of the date of invoice. The Auctioneer reserves the right to charge the **interest at the rate of 2% per month** for the overdue amount.
- 16) Payment shall be by cash in Indian Rupees or by cheques / DD drawn on Indian banks. The purchase price shall be paid upon delivery of the lot or receipt of Invoice for the lot, whichever occurs first. All associated costs for the delivery of lots such as **handling, shipping, and insurance** will be added to the purchase price. Credit card Payments are subject to **2% surcharge** on Master, Visa and American Express Cards.
- 17) The Auctioneer will not hold himself responsible for the safe custody of any lots left for more than **seven (7) working days** after the date of sale, and reserves the right to charge storage and re-sell by auction or privately, and without notice to the buyer, any lots not removed from his premises within **fourteen (14) days** from the date of sale. Buyers shall not be entitled to remove lots from the auction room during the course of the auction.
- 18) **Export of Antiquities:** Buyers are requested to note that according to the Antiquities and Art Treasures Act, 1972 (Act No. 52 of 1972), items (including coins) **over 100 years old**, cannot be exported out of India except the permission of the Director General, Archaeological Survey of India, Janpath, New Delhi.
- 19) By bidding in the auction, the Bidder enters in a **legal contract** and accepts to honour all his/her successful bids within 7 days of the receipt of his invoice. By making a bid the buyer acknowledges **his/her acceptance** of these conditions of sale and shall be bound by them. These Conditions shall take effect and be construed in accordance with Indian law and are subject to Mumbai Jurisdiction.
- 20) The auction is conducted in **Indian Rupees**.
- 21) Subject to transfer of ownership along with registration of antiquities in accordance with the provisions of the Antiquities and Art Treasure Act, 1972 and rules made thereafter, all lots of antiquities will be shipped out in an "**as is**" condition meaning that the item is sold with all existing faults and imperfections.
- 22) The Bidders are required to provide all **invoicing details** to the Rajgor's Auctions prior to the sale at the time of registering.
- 23) The price estimates **do not include** any packing, shipping, handling or insurance charges, all of which will be borne by the buyer. The exact amount of shipping-handling and insurance will be conveyed when the final invoice is prepared.
- 24) All duties and taxes as applicable, including **VAT and Service Tax** will be borne by the buyer.
- 25) Purchases are normally shipped within 60 days from the date of the receipt of the full payment and of the transfer of papers duly signed by the buyer. The transfer and or delivery of ownership of antiquities along with registration is a regulatory process administered by the Archaeological Survey of India and may take longer than envisaged period of 60 days. The buyer will be informed about the current status or delay of their transfers.
- 26) Buyers may choose to collect their purchases from the Rajgor's Auctions office in Mumbai after the transfer is completed.
- 27) The buyer shall ensure that all **payment formalities are completed within 7 working days** of the receipt of the invoice. In case payment is not received within such period, this shall be treated as a breach of contract and the Rajgor's Auctions may take any steps, including the institution of legal proceedings, which are appropriate to enforce payment by the buyer. The buyer shall also be charged **demurrage @ 1% per month** on the value of the lots.



Rajgor'sTM

ACADEMY | AUCTIONS | CERTIFICATION



www.Rajgors.com